

 **BOEING**
COMPONENT
MAINTENANCE MANUAL

TO: ALL HOLDERS OF FORWARD DOOR BUSTLE ASSEMBLY
COMPONENT MAINTENANCE MANUAL 52-11-03

REVISION NO. 3 DATED JUL 01/04

HIGHLIGHTS

Pages which have been added or revised are outlined below together with the highlights of the revision. Remove and insert the affected pages as listed and enter Revision No. and date on the Record of Revision Sheet.

CHAPTER/SECTION

AND PAGE NO.

DESCRIPTION OF CHANGE

TITLE PAGE

Added bustle assembly 416T2042-20, made by a different procedure.

1

301-302

701

1002-1011,1023-1039

CONTENTS

Added clarifications and updated callouts.

1

DESCRIPTION & OPERATION

1

301-302

501

REPAIR-GEN

601

REPAIR 1-1

601

REPAIR 2-1

601

REPAIR 3-1

601

REPAIR 4-1

601

701-703

1002-1014,1016-1039

52-11-03

HIGHLIGHTS

01.1

Page 1

Jul 01/04

FORWARD DOOR BUSTLE ASSEMBLY

PART NUMBERS 416T2042-4,-5,-9 THRU -12,-20

COMPONENT MAINTENANCE MANUAL
WITH
ILLUSTRATED PARTS LIST

52-11-03

TITLE PAGE

Page 1

Jul 01/04

01.1



REVISION RECORD

- Retain this record in front of manual. On receipt of revision, insert revised pages in the manual, and enter revision number, date inserted and initial.

REVISION NUMBER	REVISION DATE	DATE FILED	BY	REVISION NUMBER	REVISION DATE	DATE FILED	BY

52-11-03

REVISION RECORD

01

Page 1

Jan 10/85



TEMPORARY REVISION AND SERVICE BULLETIN RECORD

BOEING SERVICE BULLETIN	BOEING TEMPORARY REVISION	OTHER DIRECTIVE	DATE OF INCORPORATION INTO MANUAL
		PRR B11157 PRR B11700-2 PRR B11700-502	JAN 10/85 JUL 01/92 JUL 01/92

52-11-03

TR & SB RECORD

01.1

Page 1

Jul 01/92


BOEING
 COMPONENT
 MAINTENANCE MANUAL

PAGE	DATE	CODE	PAGE	DATE	CODE
52-11-03			REPAIR 1-1		
			*601	JUL 01/04	01.1
			602	BLANK	
TITLE PAGE			REPAIR 2-1		
*1	JUL 01/04	01.1	*601	JUL 01/04	01.1
2	BLANK		602	BLANK	
REVISION RECORD			REPAIR 3-1		
1	JAN 10/85	01	*601	JUL 01/04	01.1
2	BLANK		602	BLANK	
TR & SB RECORD			REPAIR 4-1		
1	JUL 01/92	01.1	*601	JUL 01/04	01.1
2	BLANK		602	BLANK	
LIST OF EFFECTIVE PAGES			ASSEMBLY		
*1	JUL 01/04	01	*701	JUL 01/04	01.1
THRU LAST PAGE			*702	JUL 01/04	01.1
CONTENTS			*703	JUL 01/04	01.1
*1	JUL 01/04	01.1	704	BLANK	
2	BLANK		ILLUSTRATED PARTS LIST		
INTRODUCTION			1001	JAN 10/85	01
1	JUL 10/86	01.1	*1002	JUL 01/04	01.1
2	BLANK		*1003	JUL 01/04	01.1
DESCRIPTION & OPERATION			*1004	JUL 01/04	01.1
*1	JUL 01/04	01.1	*1005	JUL 01/04	01.1
2	BLANK		*1006	JUL 01/04	01.1
DISASSEMBLY			*1007	JUL 01/04	01.1
*301	JUL 01/04	01.1	*1008	JUL 01/04	01.1
*302	JUL 01/04	01.1	*1009	JUL 01/04	01.1
CHECK			*1010	JUL 01/04	01.1
*501	JUL 01/04	01.1	*1011	JUL 01/04	01.1
502	BLANK		*1012	JUL 01/04	01.1
REPAIR-GENERAL			*1013	JUL 01/04	01.1
*601	JUL 01/04	01.1	*1014	JUL 01/04	01.1
602	BLANK		*1015	JUL 01/04	01.1
			*1016	JUL 01/04	01.1
			*1017	JUL 01/04	01.1
			*1018	JUL 01/04	01.1
			*1019	JUL 01/04	01.1
			*1020	JUL 01/04	01.1

* = REVISED, ADDED OR DELETED

52-11-03

EFFECTIVE PAGES

CONTINUED Page 1

01 Jul 01/04

PAGE	DATE	CODE	PAGE	DATE	CODE
ILLUSTRATED PARTS LIST		CONT.			
*1021	JUL 01/04	01.1			
*1022	JUL 01/04	01.1			
*1023	JUL 01/04	01.1			
*1024	JUL 01/04	01.1			
*1025	JUL 01/04	01.1			
*1026	JUL 01/04	01.1			
*1027	JUL 01/04	01.1			
*1028	JUL 01/04	01.1			
*1029	JUL 01/04	01.1			
*1030	JUL 01/04	01.1			
*1031	JUL 01/04	01.1			
*1032	JUL 01/04	01.1			
*1033	JUL 01/04	01.1			
*1034	JUL 01/04	01.1			
*1035	JUL 01/04	01.1			
*1036	JUL 01/04	01.1			
*1037	JUL 01/04	01.1			
*1038	JUL 01/04	01.1			
*1039	JUL 01/04	01.1			
*1040	BLANK				

* = REVISED, ADDED OR DELETED

52-11-03

EFFECTIVE PAGES
 LAST PAGE Page 2
 01 Jul 01/04

TABLE OF CONTENTS

<u>Paragraph Title</u>	<u>Page</u>
Description and Operation	1
Testing and Trouble Shooting (not applicable)	
Disassembly	301
Cleaning. * [1]	
Check	501
Repair.	601
Assembly.	701
Fits and Clearances (not applicable)	
Special Tools (not applicable)	
Illustrated Parts List.	1001

*[1] Special instructions are not necessary. Use standard industry practices and the instructions in SOPM 20-30-03.

52-11-03

CONTENTS

01.1

Page 1

Jul 01/04



INTRODUCTION

The instructions in this manual provide the information necessary to perform maintenance functions ranging from simple checks and replacement to complete shop-type repair.

This manual is divided into separate sections:

- | | |
|--|------------------------------|
| 1. Title Page | 4. List of Effective Pages |
| 2. Record of Revisions | 5. Table of Contents |
| 3. Temporary Revision &
Service Bulletin Record | 6. Introduction |
| | 7. Procedures & IPL Sections |

Refer to the Table of Contents for the page location of applicable sections. An asterisked flagnote *[] in place of the page number indicates that no special instructions are provided since the function can be performed using standard industry practices.

The beginning of the REPAIR section includes a list of the separate repairs, a list of applicable standard Boeing practices, and an explanation of the True Position Dimensioning symbols used.

An explanation of the use of the Illustrated Parts List is provided in the Introduction to that section.

All weights and measurements used in the manual are in English units, unless otherwise stated. When metric equivalents are given they will be in parentheses following the English units.

Design changes, optional parts, configuration differences and Service Bulletin modifications create alternate part numbers. These are identified in the Illustrated Parts List (IPL) by adding an alphabetical character to the basic item number. The resulting item number is called an alpha-variant. Throughout the manual, IPL basic item number references also apply to alpha-variants unless otherwise indicated.

Verification

Disassembly 3/86

Assembly 3/86

52-11-03

INTRODUCTION

01.1

Page 1

Jul 10/86



FORWARD DOOR BUSTLE ASSEMBLY

DESCRIPTION AND OPERATION

1. Description

A. The bustle assembly includes tedlar covered honeycomb shells, latch assemblies, spring brackets, hinges, and associated components.

2. Operation

A. The bustle assembly is attached to the forward entry door to give protection to the escape slide assembly. During escape slide deployment, the lower shell opens and lets the escape slide drop out of the door.

3. Leading Particulars (approximate)

Height -- 45 inches

Length -- 22 inches

Width -- 14 inches

Weight -- 16 pounds

52-11-03

DESCRIPTION & OPERATION

01.1

Page 1

Jul 01/04

DISASSEMBLY1. Disassembly

CAUTION: THE BUSTLE ASSEMBLY CAN BE SEEN FROM THE AIRPLANE INTERIOR. BE CAREFUL NOT TO DAMAGE SURFACES THE PASSENGERS WILL SEE.

NOTE: Disassemble this component only as necessary to complete fault isolation, to find part serviceability, to do repairs, and to put the unit back in a serviceable condition.

A. Separate upper and lower shell assemblies (620, 640, IPL Fig. 1).

(1) Remove screws (345), washer (350), and anchor straps (370).

CAUTION: HOLD THE CABLE, WHEN YOU REMOVE SCREWS AND WASHERS, OR THE CABLE COULD BREAK WHEN THE SCREWS ARE REMOVED.

(2) 416T2042-4, -5 assemblies

(a) Turn the shells (580, 685) on the hinge to release the hinge halves (620, 640).

(b) Remove hinge half (640) and connection hinge (610).

(c) Remove hinge pin (615).

(3) 416T2042-9, -10, -11, -12, -20 assemblies

(a) Remove screws (585) and washers (590) and upper and lower shells.

(b) Remove hinge half (643G) with bolt (642), screws (642G) and washers (642P).

B. Remove screws (250), washers (255) and spring bracket assemblies (245).

C. Remove cotter pin (320), washer (330) and drilled shank pin (325).

D. Remove link (335) and springs (315).

E. Remove latch assemblies (135, 140) with screws (145) and washers (150).

F. Remove cotter pin (175), washer (185), drilled shank pin (180) and latch (190).

52-11-03

DISASSEMBLY

01.1

Page 301

Jul 01/04

- G. Remove screws (195) and clip (200).
- H. Remove screws (155), washers (160) and leg latch housing (170).
- I. Remove viewport assembly (395) with screw (5), washer (10) and viewport retainer (390).
- J. Remove screws (510), washers (515), and handles (520, 525).
- K. Remove handle covers (520, 525) and handles (530, 535) with screws (540, 545).
- L. Remove corner seal (100, 105) with screws (110).
- M. Assemblies 416T2042-9, -10, -11, -12, -20: Remove seal (131) and stiffener (130P) with screws (130).
- N. Assemblies 416T2042-5, -6: Remove seal (125) and strips (120) with screws (115, 130).
- O. Remove tab assembly (65, 70) and leveling ramp (60) with screws (55) and washers (57).
- P. Remove channel assembly (435) with screws (440) and washers (445).
- Q. Assemblies 416T2042-5, -10: Remove insert (495), rub-strip (490), end cap (500) with screws (475) and washers (480).
- R. Remove screws (650), washers (655) and rub-strip (645).
- S. Remove screws (642) and retainer (675).
- T. Remove seals (30, 35, 40, 45), retainers (20, 25) and viewport retainer (390) with screws (5) and washers (10).
- U. Remove leveling ramps (60) and tab assemblies (65, 70) with screws (55) and washers (57).

52-11-03

DISASSEMBLY

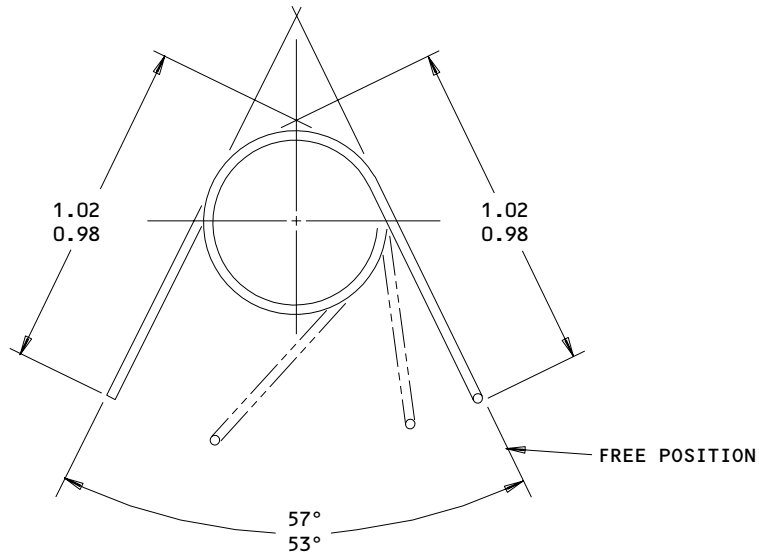
01.1

Page 302

Jul 01/04

CHECK

- | 1. Examine all parts for defects by standard industry practices.
- | 2. Penetrant examine housing (170A) and retainer (675) (SOPM 20-20-02).
- | 3. Make a check of spring (405, 410 IPL Fig. 1) as specified in Fig. 501.



ITEM NO. FIG. 1	TEST DEFLECTION (DEGREE) (FROM FREE POSITION)	ALLOWABLE LOAD LIMIT (POUND-INCH)
405,410	15-19	0.072-0.088
	73-77	0.324-0.396

416T2305-1,-2
 Spring Check
 Figure 501

159711

52-11-03

REPAIR – GENERAL

1. Repair and refinish procedures are included in separate repair section as follows:

<u>P/N</u>	<u>NAME</u>	<u>REPAIR</u>
416T2246	HOUSING	1-1
- -	MISCELLANEOUS PARTS	2-1
- -	REFINISH	2-1
416T2042	BUSTLE ASSEMBLY	3-1
416T2278	TAB ASSEMBLY	4-1

2. Standard Practices

- A. Refer to the following standard practices, as applicable, for details of procedures in individual repairs.

20-30-02 Stripping of Protective Finishes
 20-41-01 Decoding Table for Boeing Finish Codes
 20-41-02 Applications of Chemical and Solvent Resistant Finish
 20-42-05 Bright Cadmium Plating
 20-50-08 Application of Bonded Solid Film Lubricant
 20-50-12 Application of Adhesives
 20-60-02 Finishing Materials
 20-60-03 Lubricants

3. Materials

NOTE: Equivalent substitute can be used.

- A. Primer -- BMS 10-11, Type 1 (SOPM 20-60-02)
 B. Lubricant -- MIL-L-8937 (SOPM 20-60-03)
 C. Lubricant -- BMS 3-8 (SOPM 20-60-03)
 D. Adhesives (SOPM 20-50-12)
 (1) Type 60
 (2) Type 82
 (3) Type 89

52-11-03

REPAIR-GENERAL

01.1

Page 601

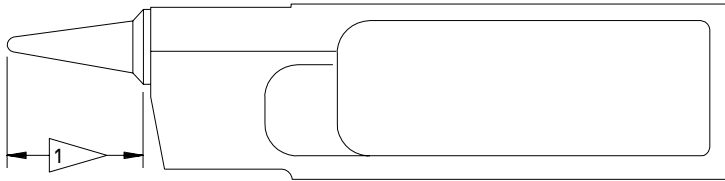
Jul 01/04

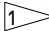
HOUSING - REPAIR 1-1

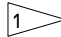
416T2246-5, -6

1. Coating Repair

- A. Repair is only replacement of the original finish. Refer to Refinish instructions, Fig. 601. Refer to REPAIR-GEN for a list of applicable standard practices.

**REFINISH:**

CHROMIC ACID ANODIZE AND APPLY
 BMS 10-11 TYPE 1 PRIMER (F-18.13)
 UNLESS SHOWN BY 

 APPLY TYPE 6, CLASS 1 LUBRICANT
 (F-19.81) OR TYPE 8, SOLID FILM
 LUBRICANT (F-19.10)

REPAIR:

MATERIAL: AL ALLOY
 ALL DIMENSIONS ARE IN INCHES

416T2246-5,-6
 Housing Refinish
 Figure 601

159712

52-11-03

REPAIR 1-1

01.1

Page 601

Jul 01/04

MISCELLANEOUS PARTS REFINISH – REPAIR 2-1

1. Repair of these parts is only replacement of the original finish. Refer to REPAIR – GENERAL for a list of applicable standard practices.

IPL FIG. & ITEM	MATERIAL	FINISH
<u>Fig. 1</u>		
Insert (90)	15-5PH CRES 150-170 ksi	Passivate (F-17.25, which replaces F-17.09).
Spring (405,410)	17-7PH CRES CH900	Passivate (F-17.25, which replaces F-17.09).
Hinge Pin (615)	AISI 304 CRES	Passivate (F-17.25, which replaces F-17.09) and apply solid film lubricant MIL-L-8937 to outside diameter.
Housing (170,170A) Clip (200)	Al alloy	Chromic acid anodize and apply BMS 10-11, Type 1 primer (F-18.13).
Retainer (20,25) Bracket (310,455, 465,470) Link (335) Anchor strap (370) Hinge connection (610) Retainer (675) Channel (715)	Al alloy	Chemical treat and apply BMS 10-11, Type 1 primer (F-18.06).
Retainer (390)	17-7PH CRES	Cadmium plate (F-15.06).
Hinge half (620, 640)	Al alloy	Chromic acid anodize (F-17.02).

Refinish Details
Figure 601

52-11-03

REPAIR 2-1

01.1

Page 601

Jul 01/04



TAB ASSEMBLY – REPAIR 4-1

416T2278-1, -2

NOTE: Refer to REPAIR – GEN fan list of applicable standard practices.

| 1. Pad Replacement (IPL Fig. 1)

- | A. Bond a replacement pad (72) to tab (71) with Type 60 adhesive (SOPM 20-50-12).

52-11-03

REPAIR 4-1

01.1

Page 601

Jul 01/04

ASSEMBLY

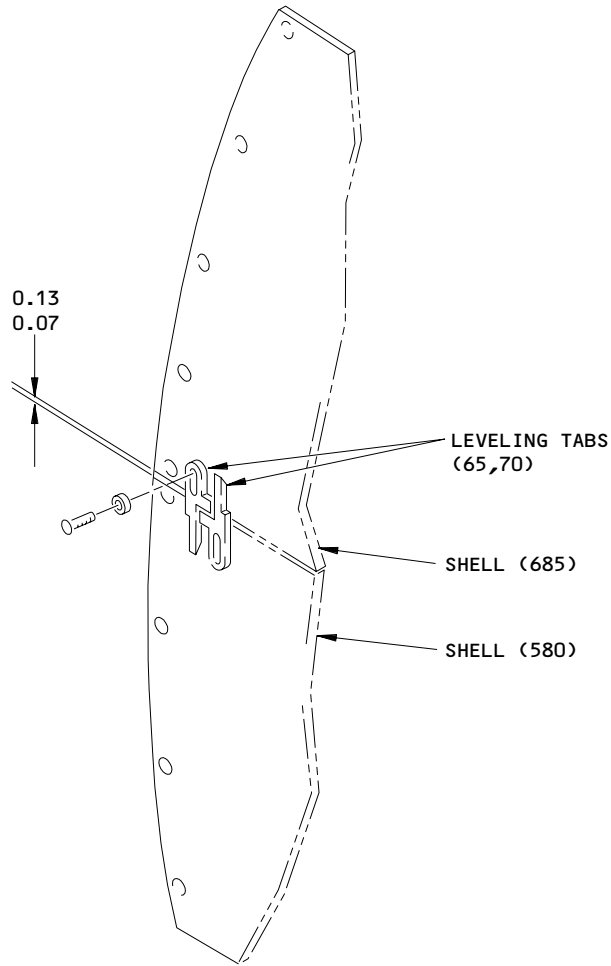
- | 1. Install channel (435, IPL Fig. 1) with washers (445) and screws (440).
2. 416T2042-4, -5 assemblies
 - | A. Install hinge half (640) on shell (685) with screws (630), bolts (625) and washers (635).
 - | B. Install connection hinge (610) and hinge half (620) on shell (580) with screws (585) and washers (590, 635).
- | 3. 416T2042-9, -10, -11, -12, -20 assemblies: Attach hinge (641) on shell (685) with bolts (642), screws (642G) and washers (642P).
- | 4. Install leg latch housing (170) to housing (220, 235) with washers (160) and screws (155).
- | 5. Install clips (200) on housing (220, 235) with screws (195).
- | 6. Install latches (190) on housing (220, 235) with drilled shank pin (180), washer (185), and cotter pin (175).
- | 7. Install latch assemblies (135, 140) with washers (150), and screws (145).
- | 8. Install pad (380) with screws (385).
- | 9. Attach spring (315) to bracket (245).
10. Attach link (335) to spring (315).
- | 11. Attach cable (340, 341) to link (335) with drilled shank pin (325), washer (330), and cotter key (320).
- | 12. Install spring bracket (245) on shell assembly (685) with washers (255) and screws (250).
- | 13. 416T202-4, -5, assemblies: Assemble shells (580, 685) and engage hinge halves (620, 640).
- | 14. 416T2042-9, -10, -11, -12 -20 assemblies: Assemble shells (580, 685), and attach connection hinge (611) to shell (580) with screws (585) and washers (590).
- | 15. 416T2042-4, -5, assemblies: Attach seal (125) and strips (120) to shell with screws (115, 130).
- | 16. 416T2042-9, -10, -11, -12, -20 assemblies: Attach seal (131) and stiffener (130P) to shell with washers (133) and screws (130).
- | 17. Attach corner seal (100, 105) with screws (110).

52-11-0301.1 ASSEMBLY
Page 701
Jul 01/04

18. Install retainer (675) with screws (642).
19. Install rubstrip (645) and support block (660) with screws (650) and washers (655).
20. Install handle covers (520, 525) and handles (530, 535) with washers (550) and screws (540, 545). Cut the rubstrip as necessary to fit the handle covers.
21. Install seals (30, 35, 40, 45), retainers (20, 25) and viewports (390) with screws (5) and washers (10).
22. Install viewport (395).
23. Attach channel assembly (435) to shell with screws (440) and washers (445).
24. 416T2042-5, -10 assemblies: Install end cap (500), rubstrip (490) with screws (475) and washers (480) and install insert over rubstrip.
25. Attach strap anchor (370) to shell with screws (350) and washers (345).
26. Attach tab assemblies (65, 70) and leveling ramps (60) with screws (55) and washers (57) and adjust as shown in Fig. 701.

52-11-03ASSEMBLY
Page 702
Jul 01/04

01.1



ITEM NUMBERS REFER TO IPL FIG. 1

Leveling Tab Adjustment
Figure 701

52-11-03

ASSEMBLY
Page 703
Jul 01/04

01.1

ILLUSTRATED PARTS LIST

1. This section lists and illustrates replaceable or repairable component parts. The Illustrated Parts Catalog contains a complete explanation of the Boeing part numbering system.

2. Indentures show parts relationships as follows:

Assembly

Detail Parts for Assembly

Subassembly

Attaching Parts for Subassembly

Detail Parts for Subassembly

Detail Installation Parts (Included only if installation parts may be returned to shop as part of assembly)

3. One use code letter (A, B, C, etc.) is assigned in the EFF CODE column for each variation of top assembly. All listed parts are used on all top assemblies except when limitations are shown by use code letter opposite individual part entries.

4. Letter suffixes (alpha-variants) are added to item numbers for optional parts, Service Bulletin modification parts, configuration differences (Except left- and right-hand parts), product improvement parts, and parts added between two sequential item numbers. The alpha-variant is not shown on illustrations when appearance and location of all variants of the part is the same.

5. Service Bulletin modifications are shown by the notations PRE SB XXXX and POST SB XXXX.

A. When a new top assembly part number is assigned by Service Bulletin, the notations appear at the top assembly level only. The configuration differences at detail part level are then shown by use code letter.

B. When the top assembly part number is not changed by the Service Bulletin, the notations appear at the detail part level.

6. Parts Interchangeability

Optional
(OPT)

The parts are optional to and interchangeable with other parts having the same item number.

Supersedes, Superseded By
(SUPSDS, SUPSD BY)

The part supersedes and is not interchangeable with the original part.

Replaces, Replaced By
(REPLS, REPLD BY)

The part replaces and is interchangeable with, or is an alternate to, the original part.

52-11-03

ILLUSTRATED PARTS LIST

01 Page 1001

Jan 10/85

VENDORS

15653 FAIRCHILD FASTENERS KAYNAR PRODUCTS DIV
800 S STATE COLLEGE BLVD
FULLERTON, CALIFORNIA 92831-3001
FORMERLY VK6405 MICRODOT AEROSP LTD; FORMERLY KAYNAR TECH
KAYNAR DIV

22277 BELL-MEMPHIS INC
1650 CHANNEL AVENUE PO BOX 13187
MEMPHIS, TENNESSEE 38113-1524
FORMERLY BELL, R.E. MFG CO V11097

26590 HOOD INDUSTRIES
4615 SHEPARD STREET
BAKERSFIELD, CALIFORNIA 93309
FORMERLY IN PARAMOUNT, CALIFORNIA

46384 PENN ENGINEERING AND MFG CORP
OLD EASTON ROAD PO BOX 1000
DANBORO, PENNSYLVANIA 18916
FORMERLY IN DOYLESTOWN, PENNSYLVANIA

52828 REPUBLIC FASTENER MFG CORP
1300 RANCHO CONEJO BLVD
NEWBURY PARK, CALIFORNIA 91320-1405
FORMERLY IN SYLMAR, CALIFORNIA

65196 CABLEWARE TECHNOLOGY INC
900 INDUSTRIAL BLVD. PO BOX 7515
NAPLES, FLORIDA 33941

71087 BOOTS ACFT NUT DIV TOWNSEND CO SEE TEXTRON INC CHERRY
FASTENER TOWNSEND DIV V11815

72962 HARVARD INDUSTRIES INC
3 WERNER WAY SUITE 210
LEBANON, NEW JERSEY 08833
FORMERLY AMERACE CORP ESNA DIV
FORMERLY ELASTIC STOP NUT IN UNION, NJ

73439 AMSCO PRODUCTS CAMCAR DIV TEXTRON INC
345 EAST MARSHALL STREET
WYTHEVILLE, VIRGINIA 24382-3917
FORMERLY AMERICAN SCREW CO IN WILLIMANTIC, CONNECTICUT
FORMERLY TEXTRON INC CAMCAR DIV AMERICAN SCREW CO

52-11-03

ILLUSTRATED PARTS LIST
01.1 Page 1002
Jul 01/04

**BOEING**
COMPONENT
MAINTENANCE MANUALVENDORS

78189 ILLINOIS TOOL WORKS INC SHAKEPROOF DIVN
ST CHARLES ROAD
ELGIN, ILLINOIS 60120
FORMERLY SHAKEPROOF DIVN OF ILLINOIS TOOL WORKS B0025
FORMERLY SHAKEPROOF LOCK WASHER CO V77900

80523 BABCOCK ACCO INC ACCO CONTROLS GROUP SUB OF BABCOCK INTL
1014 ERIE STREET PO BOX 608
ADRIAN, MICHIGAN 49221-0608
FORMERLY CABLE CONTROLS DIV OF AMERICAN CHAIN AND CABLE
FORMERLY ACCO IND INC CABLE CONTROLS DIV

80539 SPS TECHNOLOGIES INC AEROSPACE PRODUCTS DIV
2701 SOUTH HARBOR BOULEVARD PO BOX 1259
SANTA ANA, CALIFORNIA 92702-1259
FORMERLY NUTT-SHEL DIV OF SPC WESTERN CO V80539
AND STANDARD PRESSED STEEL WESTERN DIV V17279

83014 HARTWELL CORPORATION
900 SOUTH RICHFIELD ROAD
PLACENTIA, CALIFORNIA 92670-6732
FORMERLY V0532B IN LOS ANGELES, CALIFORNIA

92215 FAIRCHILD IND INC FAIRCHILD AEROSPACE FASTENER DIV
3010 W LOMITA BLVD
TORRANCE, CALIFORNIA 90505-5102
FORMERLY VOI-SHAN IN CULVER CITY, CALIF

94222 SOUTHCO INCORPORATED
210 NORTH BRINTONLAKE RD PO BOX 116
CONCORDVILLE, PENNSYLVANIA 19331-0116
FORMERLY SOUTH CHESTER CORP. SOUTHCO DIVN V24248
FORMERLY IN LESTER, PENNSYLVANIA

97393 SHUR-LOK CORPORATION
2541 WHITE ROAD PO BOX 19584
IRVINE, CALIFORNIA 92713
FORMERLY SHUR LOK CORP VB0060
FORMERLY IN SANTA ANA, CALIFORNIA 92714

52-11-03ILLUSTRATED PARTS LIST
01.1 Page 1003
Jul 01/04

PART NUMBER	AIRLINE PART NO.	FIG.	ITEM	TTL REQ
AN960-10L		1	85	2
AN960C10		1	550	6
AN960C10L		1	10	16
		1	57	4
		1	150	16
		1	160	8
		1	255	8
		1	265	4
		1	330	2
		1	350	4
		1	445	6
		1	515	8
		1	579	10
AN960C3		1	360	2
BACB30LH3-4		1	50	4
BACI12AD3-07		1	555A	8
		1	595A	41
		1	690A	52
BACN10JC3		1	270	2
BACN10JC3M		1	165	4
BACN10R10		1	485	3
BACP18BC02A04P		1	175B	4
BACP18BD2C43		1	180A	4
BACR15BA4AD		1	605	14
		1	607	15
BACR15BB4AD		1	460A	3
BACR15BB4D		1	300	4
BACR15CE4D		1	450	12
BACS12FA3C4		1	110A	2
BACS12FA3C6		1	130G	11
BACS12FA3K4		1	110B	2
BACS12FA3K5		1	130J	11
BACS12FA3K6		1	130H	11
BACS12N10-4		1	110	2
		1	130	11
BACS40R007E029F		1	572	8
BACT14B2		1	356	2
BACW10P43AL		1	635	10
		1	642P	10
		1	655	2
BACW10P63AL		1	480	3
BAC12FA3K5		1	5A	16
BA3-2		1	356	2
BM2487-2		1	356	2
BRH10A3		1	270	2

52-11-03

 ILLUSTRATED PARTS LIST
 01.1 Page 1004
 Jul 01/04


BOEING
 COMPONENT
 MAINTENANCE MANUAL

PART NUMBER	AIRLINE PART NO.	FIG.	ITEM	TTL REQ
CA3105-1032-4		1	110	2
		1	130	11
CLSS032-2		1	670A	8
CMWL700-1000-1		1	190A	4
HI2487-2		1	356	2
HT200-2		1	356	2
H10-3BAC		1	270	2
H2950-5		1	190	4
MS16562-1		1	643R	2
MS20253P1-240		1	400	1
MS20253P2-2990		1	643	1
MS20392-2C9		1	325	2
MS20664C2		1	365	2
MS20667-2		1	355	2
MS21209F1-10P		1	215	4
		1	230	4
MS21209F1-30P		1	217	2
		1	232	2
		1	315	2
MS24586-764		1	320	2
MS24665-132		1	115	2
MS24693C270		1	57A	4
NAS1149D0332J		1	150A	16
		1	255A	8
		1	350A	4
		1	445A	6
		1	515A	8
		1	550A	6
		1	579A	10
NAS1738E4		1	290	4
NAS1836-3-07		1	555	8
		1	595	41
		1	690	52
NAS514P1032-5		1	130M	2
		1	195	8
		1	385	4
		1	540	2
NAS514P1032-6		1	130L	2
NAS603-10P		1	475	3
NAS603-24		1	80	2
NAS603-4		1	145	16
NAS603-4		1	250	8
		1	345	4
		1	510	8
		1	577	10

52-11-03

ILLUSTRATED PARTS LIST

01.1

Page 1005

Jul 01/04

PART NUMBER	AIRLINE PART NO.	FIG.	ITEM	TTL REQ
NAS603-4P		1	145B	16
		1	250B	8
		1	345B	4
		1	440	6
		1	510B	8
		1	577B	10
NAS603-5		1	5	16
		1	7	2
		1	545	6
		1	630	4
		1	642G	4
NAS603-6P		1	7A	2
		1	545C	6
NAS603-9		1	55	4
NAS620-10L		1	15	2
NAS620C10L		1	185	12
NAS6603-32		1	260	2
NAS6703-20		1	155	4
NAS6703-32		1	260A	2
NAS6703P4		1	642C	6
		1	650	2
NAS6703P5		1	625	6
		1	642	6
NS202101-02		1	270	2
RA2487-2		1	356	2
RMLH9075-3W		1	270	2
SL618-3A		1	696	8
		1	710	8
SP1561-1032-4		1	110	2
		1	130	11
T6S1032J		1	270	2
26C02		1	485	3
413T3702-2SP		1	505	1
416T2042-10SP		1	1C	RF
416T2042-11SP		1	1D	RF
416T2042-12A		1	1F	RF
416T2042-12D		1	1G	RF
416T2042-12E		1	1H	RF
416T2042-12F		1	1J	RF
416T2042-12G		1	1K	RF
416T2042-12H		1	1L	RF
416T2042-12J		1	1M	RF
416T2042-12L		1	1N	RF
416T2042-12P		1	1P	RF
416T2042-12R		1	1Q	RF
416T2042-12SP		1	1E	RF

52-11-03

 ILLUSTRATED PARTS LIST
 01.1 Page 1006
 Jul 01/04


BOEING
 COMPONENT
 MAINTENANCE MANUAL

PART NUMBER	AIRLINE PART NO.	FIG.	ITEM	TTL REQ
416T2042-12T		1	1R	RF
416T2042-12V		1	1T	RF
416T2042-12W		1	1S	RF
416T2042-20B		1	1U	RF
416T2042-4SP		1	1	RF
416T2042-5SP		1	1A	RF
416T2042-6SP		1	490	1
416T2042-7SP		1	495	1
416T2042-8SP		1	500	1
416T2042-9SP		1	1B	RF
416T2158-10SP		1	125	1
416T2158-13SP		1	131	1
416T2158-15B		1	131C	1
416T2158-15C		1	131B	1
416T2158-15E		1	131D	1
416T2158-15F		1	131E	1
416T2158-15SP		1	131A	1
416T2159-10		1	72	2
416T2159-11		1	71	4
416T2159-12		1	73	2
416T2159-13		1	60	2
416T2159-17		1	60A	2
416T2159-18		1	72B	2
416T2159-19		1	73A	2
416T2164-35		1	420	1
416T2178-1		1	170	8
416T2191-2		1	687	4
		1	715	4
416T2207-10SP		1	30	1
416T2207-13SP		1	45	1
416T2207-14SP		1	40	1
416T2207-17B		1	35C	1
416T2207-17C		1	35B	1
416T2207-17SP		1	35A	1
416T2207-18B		1	30C	1
416T2207-18C		1	30B	1
416T2207-18SP		1	30A	1
416T2207-21B		1	45C	1
416T2207-21C		1	45B	1
416T2207-21SP		1	45A	1
416T2207-22B		1	40C	1
416T2207-22C		1	40B	1
416T2207-22SP		1	40A	1
416T2207-9SP		1	35	1
416T2223-10		1	560A	8

52-11-03

ILLUSTRATED PARTS LIST

01.1

Page 1007

Jul 01/04

PART NUMBER	AIRLINE PART NO.	FIG.	ITEM	TTL REQ
416T2223-11		1	535A	1
416T2223-12		1	530A	1
416T2223-13		1	570A	1
416T2223-14		1	565A	1
416T2223-3		1	560	8
416T2223-6		1	530	1
416T2223-7		1	535	1
416T2223-8		1	565	1
416T2223-9		1	570	1
416T2226-1A		1	520C	1
416T2226-1B		1	520E	1
416T2226-1D		1	520S	1
416T2226-1F		1	520G	1
416T2226-1G		1	520J	1
416T2226-1H		1	520L	1
416T2226-1J		1	520N	1
416T2226-1L		1	520Q	1
416T2226-1SP		1	520	1
416T2226-2A		1	525C	1
416T2226-2B		1	525E	1
416T2226-2D		1	525S	1
416T2226-2F		1	525G	1
416T2226-2G		1	525J	1
416T2226-2H		1	525L	1
416T2226-2J		1	525N	1
416T2226-2L		1	525Q	1
416T2226-2SP		1	525	1
416T2226-7B		1	520D	1
416T2226-7C		1	520B	1
416T2226-7D		1	520R	1
416T2226-7G		1	520H	1
416T2226-7H		1	520K	1
416T2226-7J		1	520M	1
416T2226-7L		1	520P	1
416T2226-7M		1	520F	1
416T2226-8B		1	525D	1
416T2226-8C		1	525B	1
416T2226-8D		1	525R	1
416T2226-8G		1	525H	1
416T2226-8H		1	525K	1
416T2226-8J		1	525M	1
416T2226-8L		1	525P	1
416T2226-8M		1	525F	1
416T2243-3		1	170B	8
416T2244-2		1	170A	8

52-11-03

 ILLUSTRATED PARTS LIST
 01.1 Page 1008
 Jul 01/04


BOEING
 COMPONENT
 MAINTENANCE MANUAL

PART NUMBER	AIRLINE PART NO.	FIG.	ITEM	TTL REQ
416T2245-4		1	200	4
416T2245-5		1	200A	4
416T2246-5		1	205	2
416T2246-6		1	225	2
416T2246-7		1	220	2
416T2246-8		1	235	2
416T2247-2A		1	645B	1
416T2247-2B		1	645C	1
416T2247-2D		1	645J	1
416T2247-2E		1	645G	1
416T2247-2F		1	645D	1
416T2247-2G		1	645E	1
416T2247-2H		1	645F	1
416T2247-2J		1	645H	1
416T2247-2SP		1	645	1
416T2248-4		1	665	1
416T2248-5		1	675	1
416T2256-1SP		1	240	4
416T2256-2B		1	240D	4
416T2256-2C		1	240C	4
416T2256-2E		1	240E	4
416T2256-2SP		1	240A	4
416T2259-2B		1	395D	1
416T2259-2C		1	395C	1
416T2259-2E		1	395E	1
416T2259-2SP		1	395	1
416T2259-3SP		1	395A	1
416T2259-4		1	425	2
416T2260-3SP		1	430	1
416T2262-1		1	75	2
416T2262-2		1	90	2
416T2262-3		1	95	2
416T2263-1		1	120	2
416T2266-1SP		1	415	1
416T2271-11B		1	100C	1
416T2271-11C		1	100B	1
416T2271-11E		1	100D	1
416T2271-11F		1	100E	1
416T2271-11SP		1	100A	1
416T2271-12B		1	105C	1
416T2271-12C		1	105B	1
416T2271-12E		1	105D	1
416T2271-12F		1	105E	1
416T2271-12SP		1	105A	1
416T2271-7SP		1	100	1

52-11-03

ILLUSTRATED PARTS LIST

01.1

Page 1009

Jul 01/04

PART NUMBER	AIRLINE PART NO.	FIG.	ITEM	TTL REQ
416T2271-8SP		1	105	1
416T2273-1		1	620	2
416T2273-3		1	640	2
416T2274-1		1	610	2
416T2277-10		1	455	1
416T2277-6		1	465	1
416T2277-7		1	470	1
416T2277-9		1	435	1
416T2278-1		1	65	2
416T2278-2		1	70	2
416T2278-3		1	65A	2
416T2278-4		1	70A	2
416T2280-1		1	20	2
416T2280-3		1	25	2
416T2281-1		1	370	2
416T2281-2		1	335	2
416T2282-2		1	375	2
416T2282-3		1	340	2
416T2282-4		1	341	2
416T2282-5		1	362	2
416T2282-6		1	376	2
416T2283-24SP		1	580	1
416T2283-25SP		1	685	1
416T2283-26		1	700	1
416T2283-27		1	600A	1
416T2283-28		1	700A	1
416T2283-31SP		1	685A	1
416T2283-32SP		1	580A	1
416T2283-33A		1	685C	1
416T2283-33B		1	685D	1
416T2283-33C		1	685E	1
416T2283-33SP		1	685B	1
416T2283-34A		1	580C	1
416T2283-34B		1	580D	1
416T2283-34C		1	580E	1
416T2283-34SP		1	580B	1
416T2283-4		1	600	1
416T2283-50B		1	685F	1
416T2283-51B		1	580F	1
416T2284-10B		1	575D	2
416T2284-10C		1	575C	2
416T2284-10SP		1	575A	2
416T2284-7B		1	680B	1
416T2284-7C		1	680A	1
416T2284-7SP		1	680	1

52-11-03

 ILLUSTRATED PARTS LIST
 01.1 Page 1010
 Jul 01/04


BOEING
 COMPONENT
 MAINTENANCE MANUAL

PART NUMBER	AIRLINE PART NO.	FIG.	ITEM	TTL REQ
416T2284-8SP		1	575	2
416T2289-1		1	380	2
416T2289-3		1	387	2
416T2289-4		1	389	2
416T2290-1		1	615	1
416T2291-8		1	135	2
416T2291-9		1	140	2
416T2298-1SP		1	430A	1
416T2303-1		1	390	1
416T2304-1SP		1	415A	1
416T2305-1		1	405	1
416T2305-2		1	410	1
416T2311-1		1	660	2
416T2800-15		1	245	2
416T2800-17		1	310	2
416T2800-19		1	295	2
416T2800-20		1	305	2
416T2800-21		1	245A	2
416T2800-6		1	285	2
416T2800-7		1	280	2
416T2800-8		1	275	4
416T2831-2		1	130P	1
416T2832-1		1	611	1
416T2833-1		1	641	1
416T2833-2		1	643G	1
416T2833-3		1	643P	1
74-13-210-24		1	670	8
96-02		1	270	2

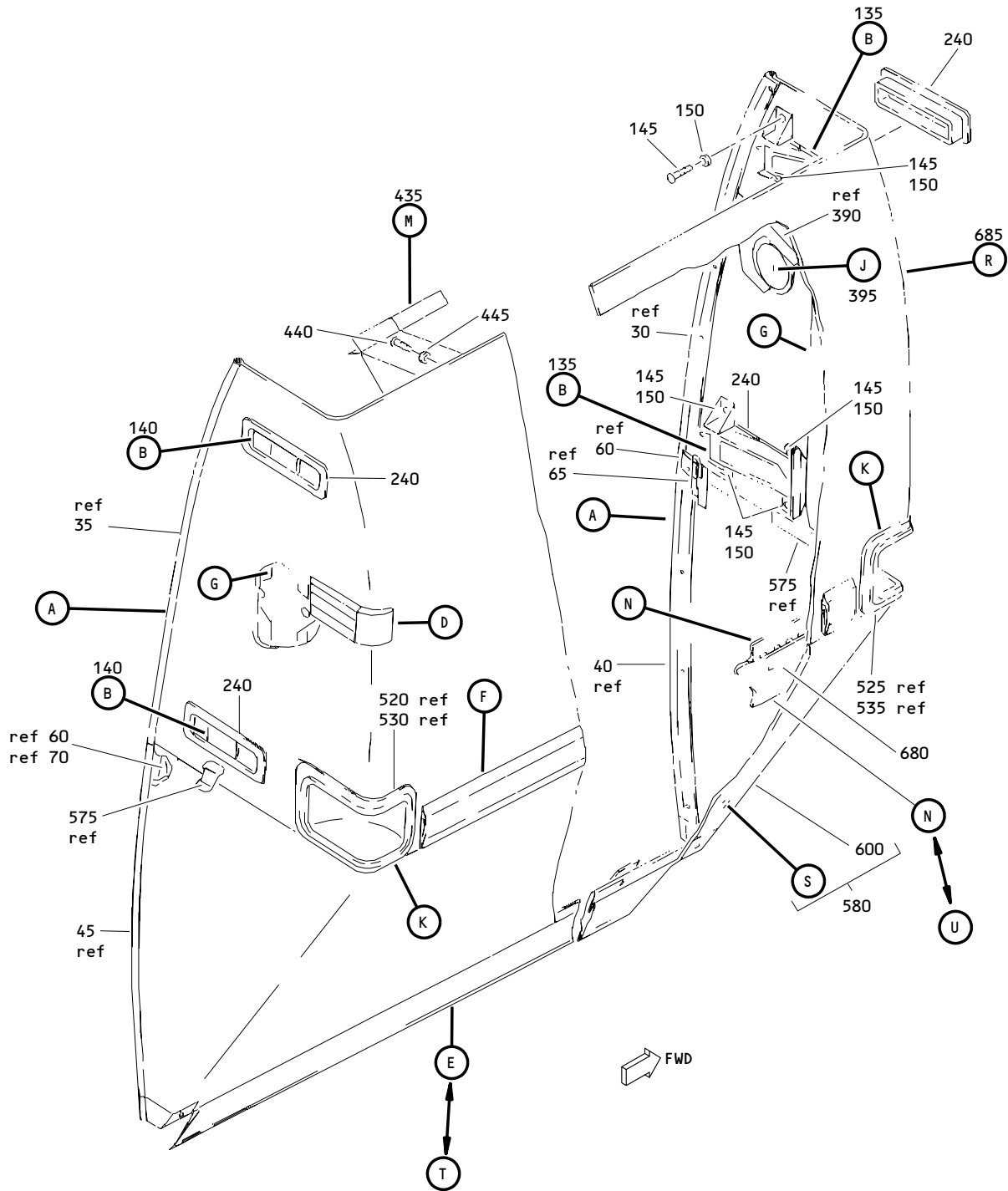
52-11-03

ILLUSTRATED PARTS LIST

01.1

Page 1011

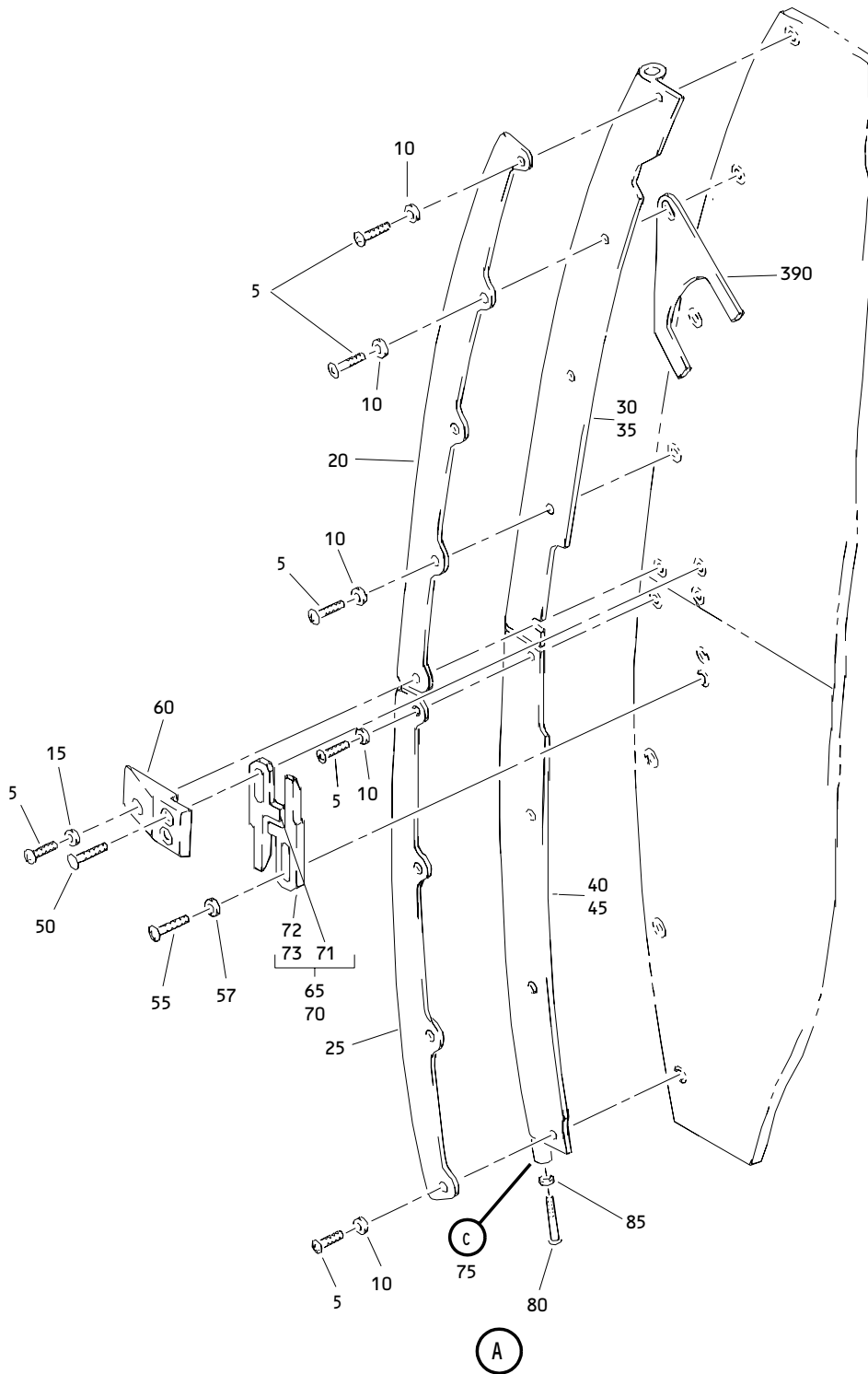
Jul 01/04



Forward Door Bustle Assembly
 Figure 1 (Sheet 1)

52-11-03

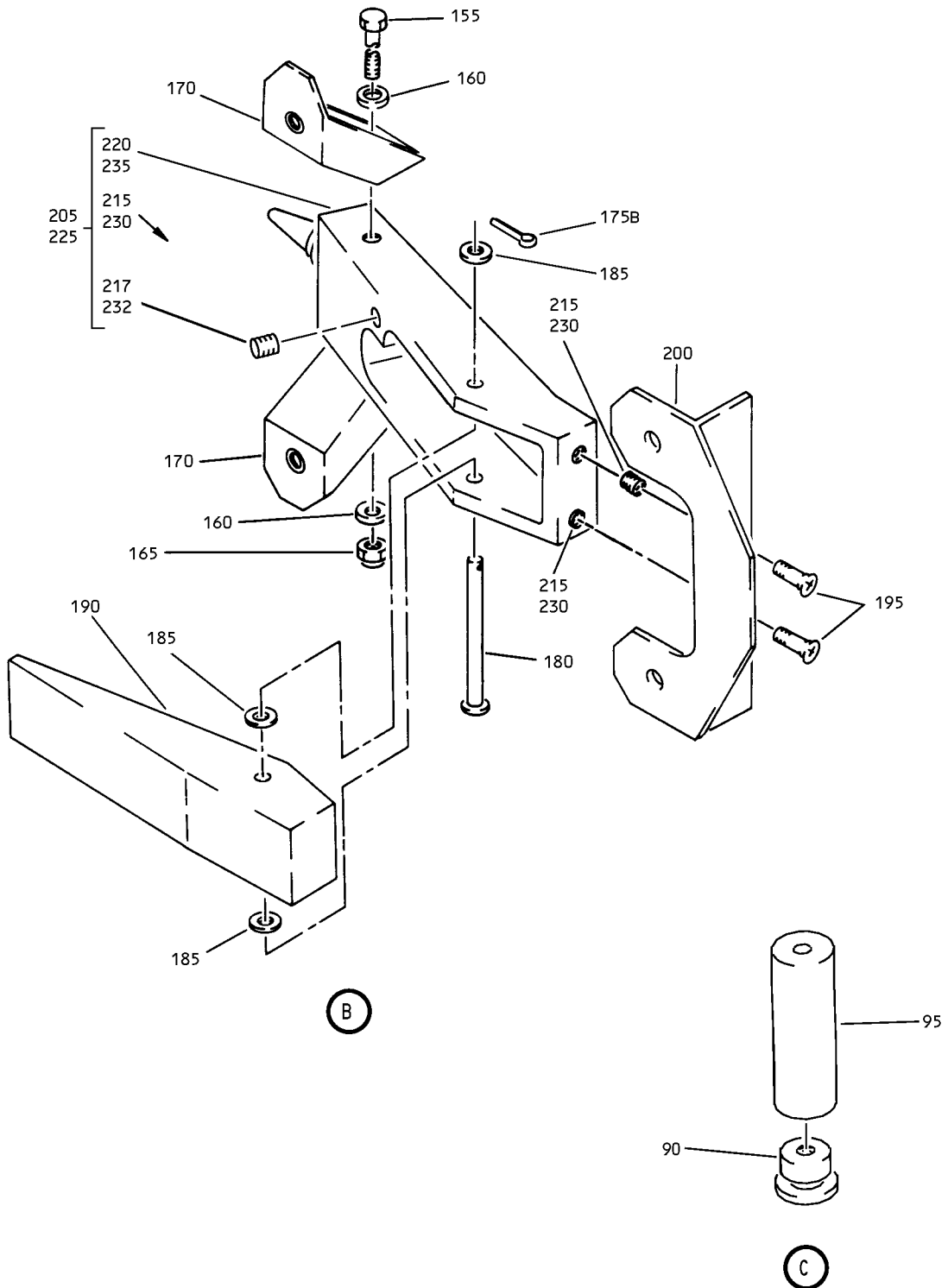
ILLUSTRATED PARTS LIST
 01.1 Page 1012
 Jul 01/04



Forward Door Bustle Assembly
Figure 1 (Sheet 2)

52-11-03

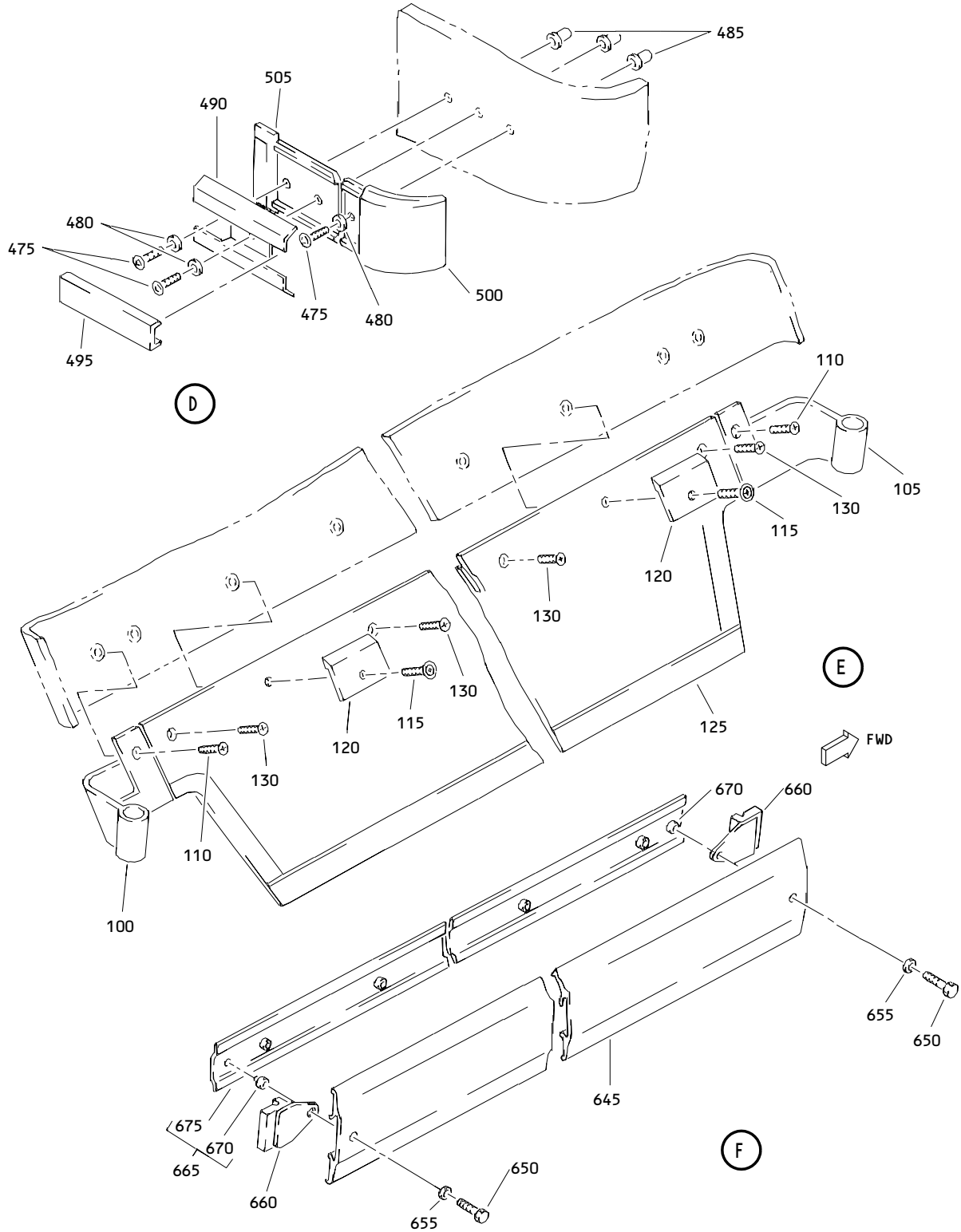
ILLUSTRATED PARTS LIST
01.1 Page 1013
Jul 01/04



Forward Door Bustle Assembly
 Figure 1 (Sheet 3)

52-11-03

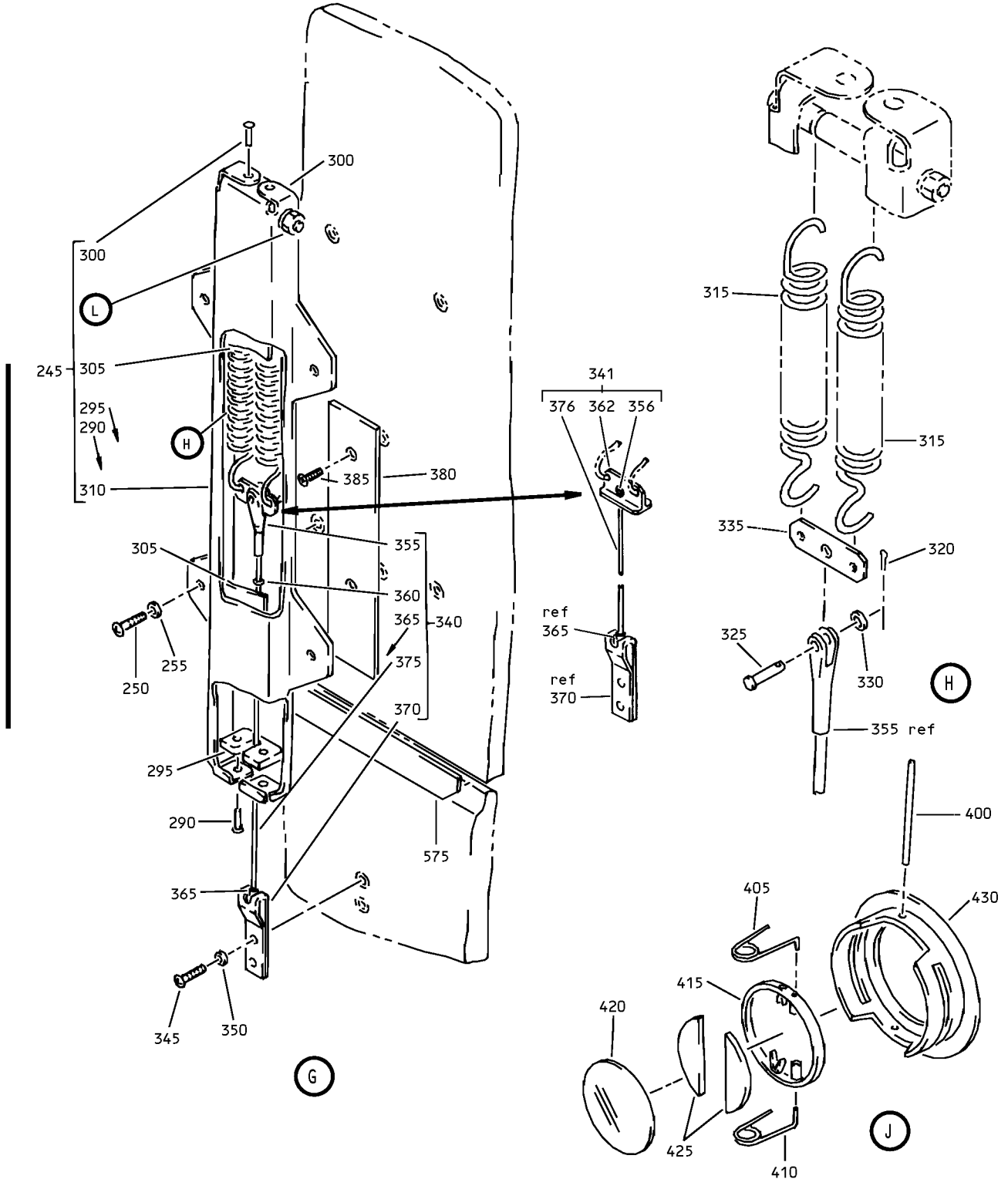
ILLUSTRATED PARTS LIST
 01.1 Page 1014
 Jul 01/04



Forward Door Bustle Assembly
Figure 1 (Sheet 4)

52-11-03

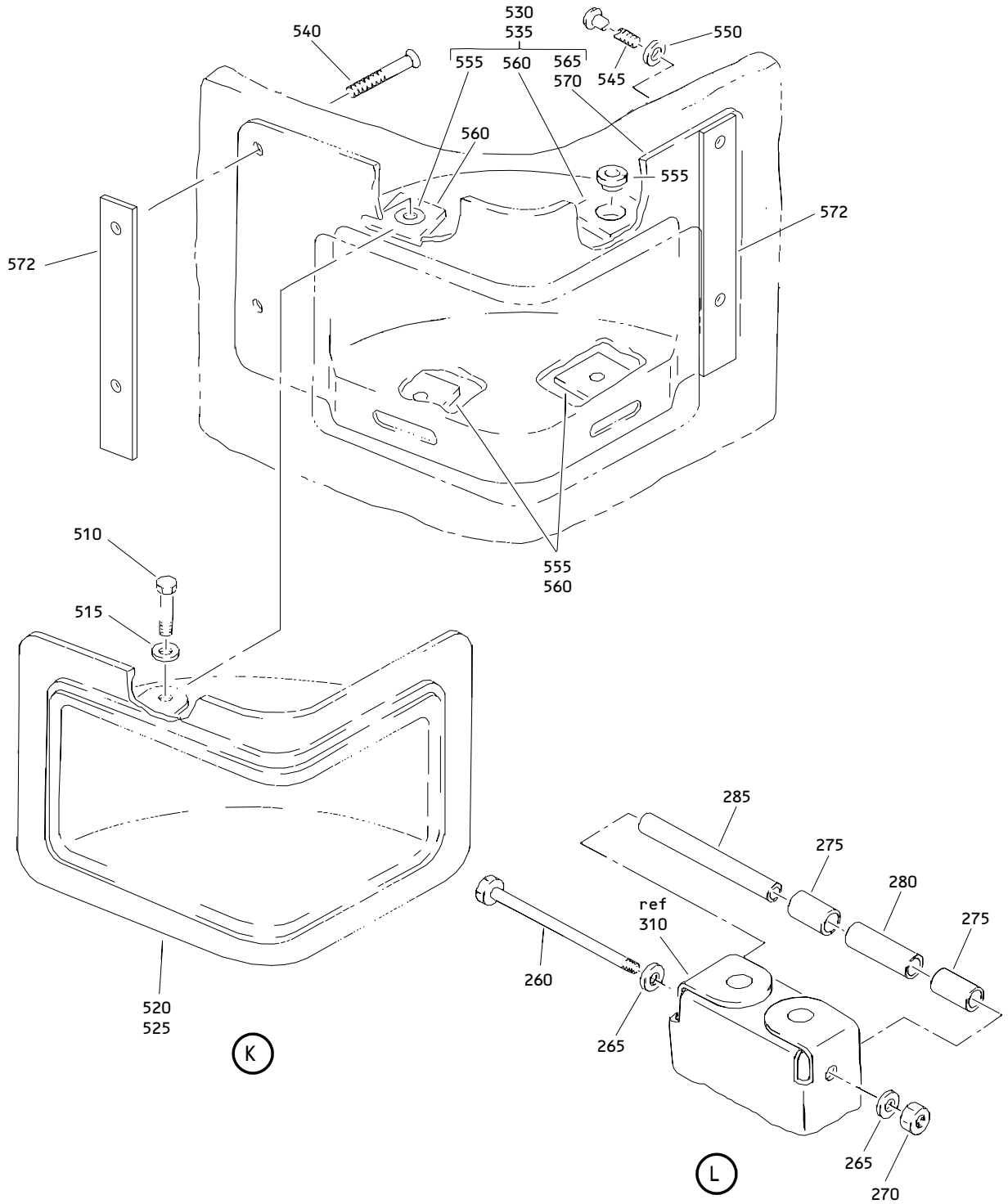
ILLUSTRATED PARTS LIST
01.1 Page 1015
Jul 01/04



Forward Door Bustle Assembly
 Figure 1 (Sheet 5)

52-11-03

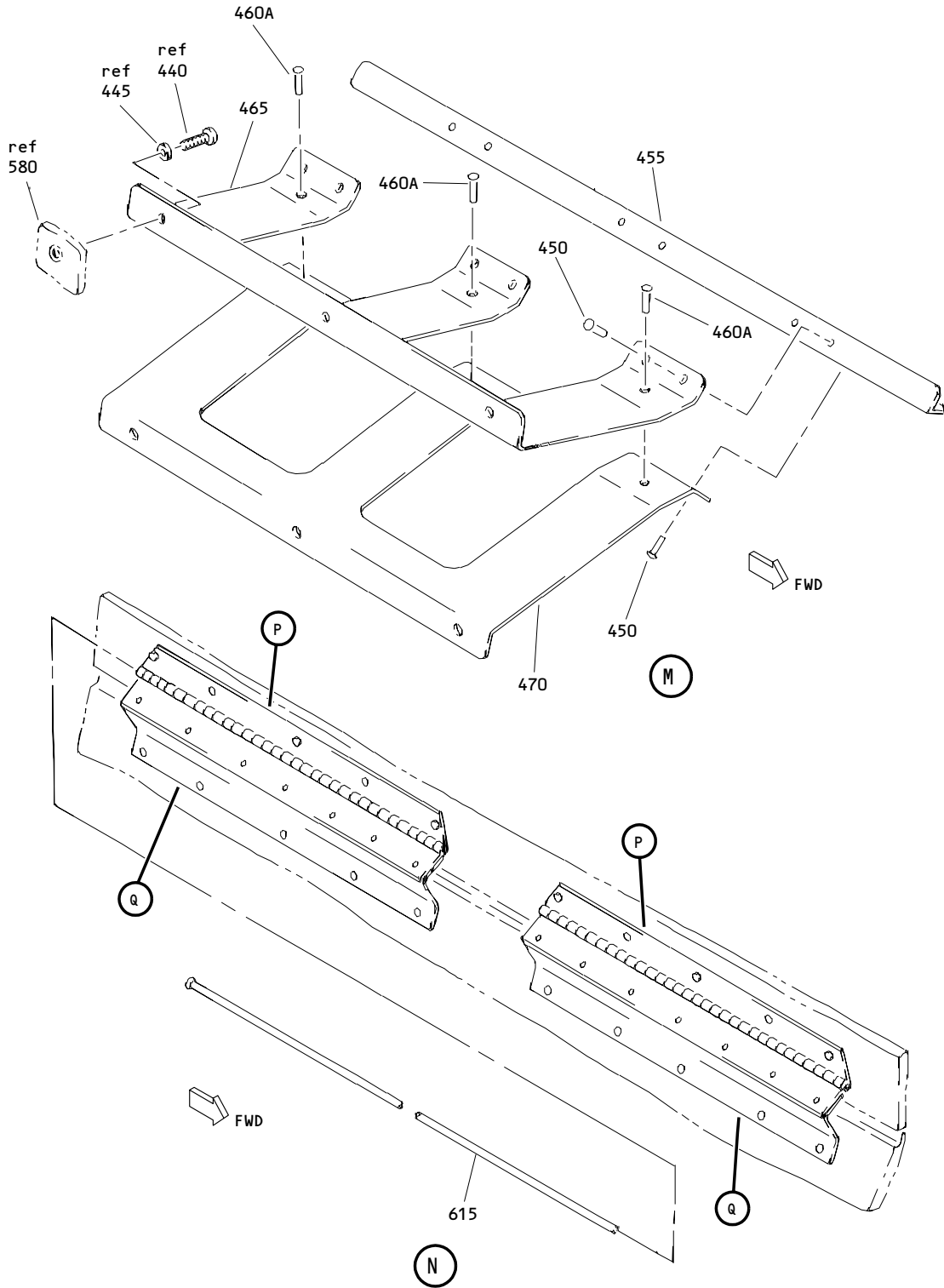
ILLUSTRATED PARTS LIST
 01.1 Page 1016
 Jul 01/04



Forward Door Bustle Assembly
Figure 1 (Sheet 6)

52-11-03

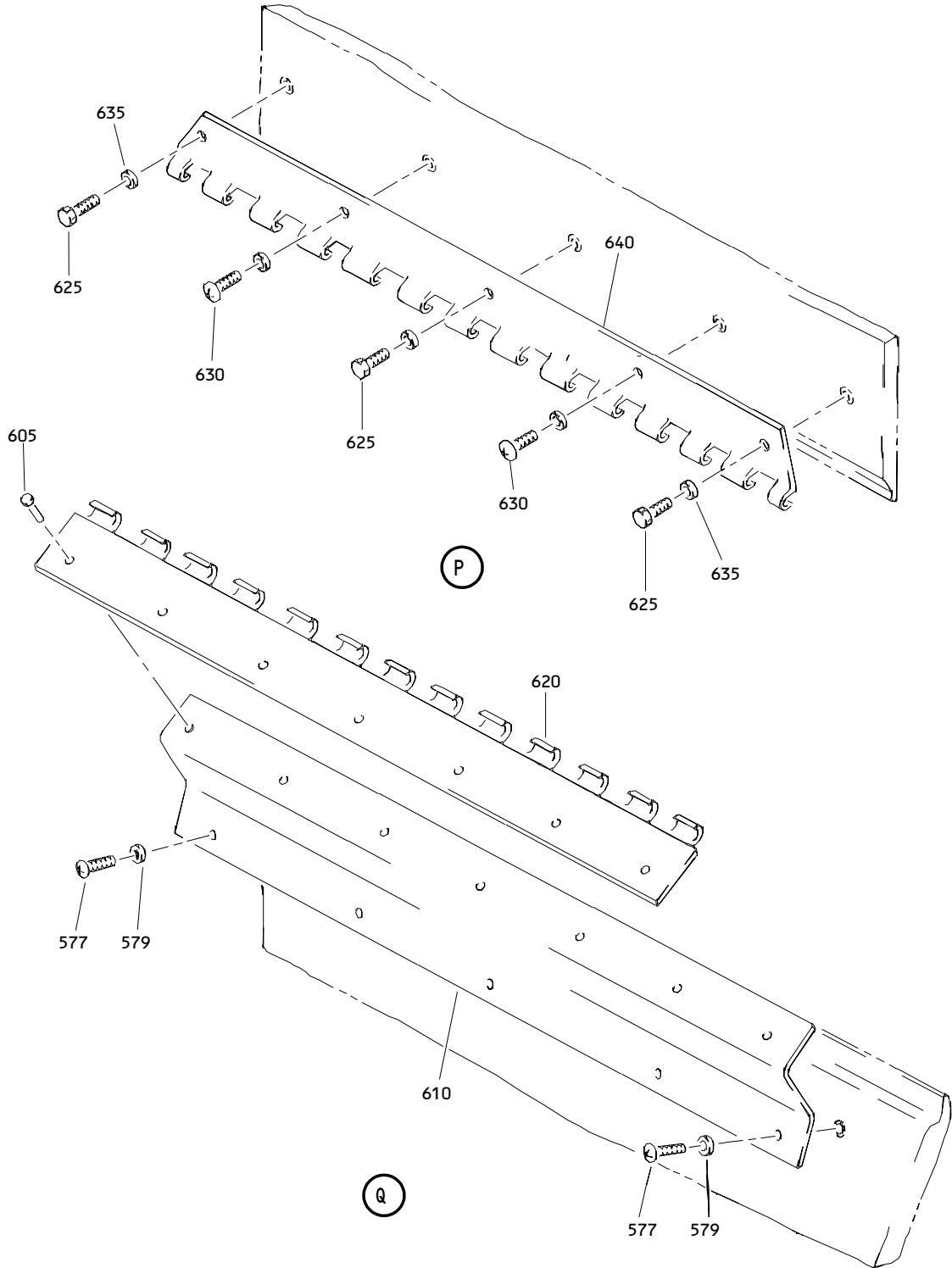
ILLUSTRATED PARTS LIST
01.1 Page 1017
Jul 01/04



Forward Door Bustle Assembly
 Figure 1 (Sheet 7)

52-11-03

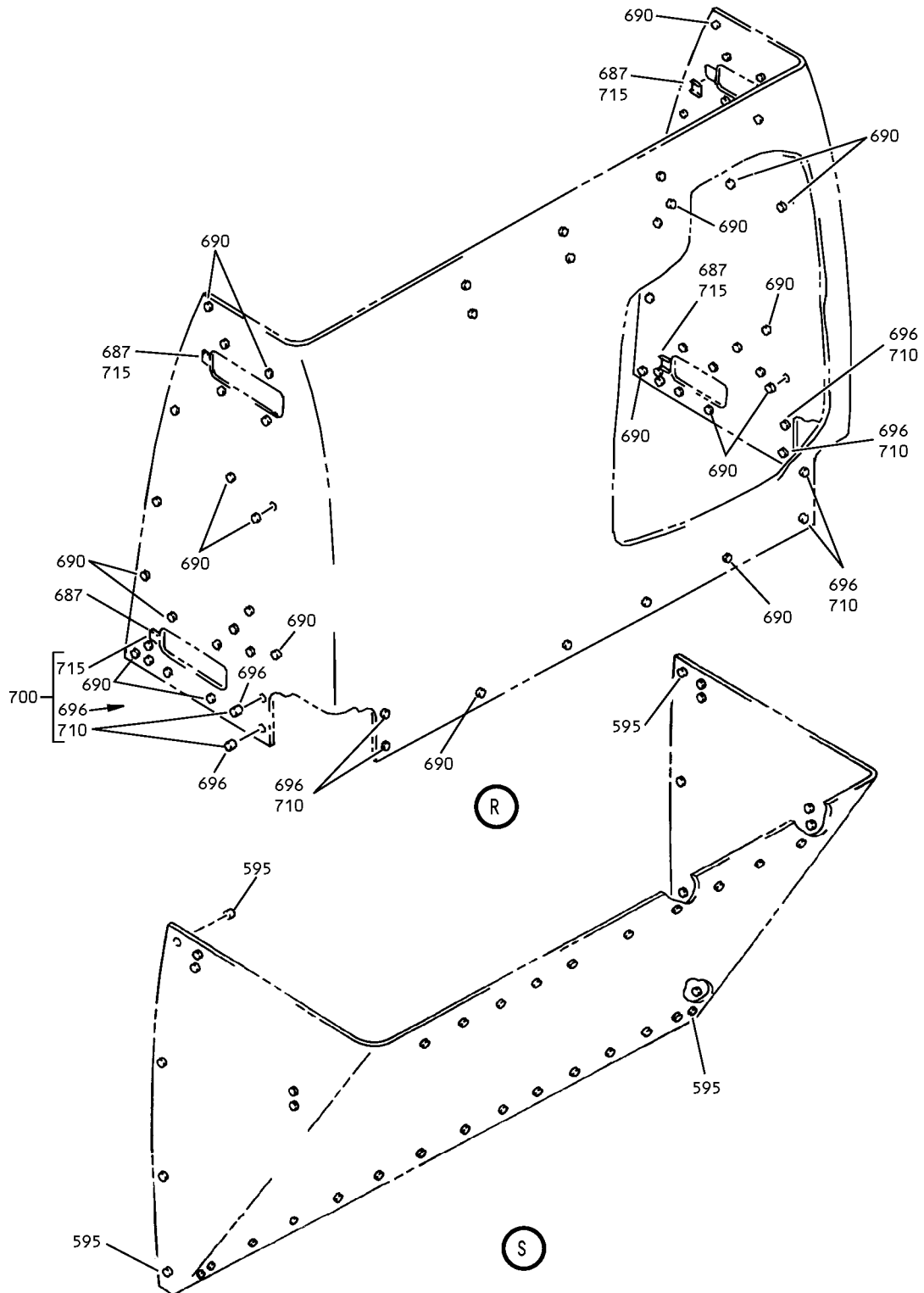
ILLUSTRATED PARTS LIST
 01.1 Page 1018
 Jul 01/04



Forward Door Bustle Assembly
Figure 1 (Sheet 8)

52-11-03

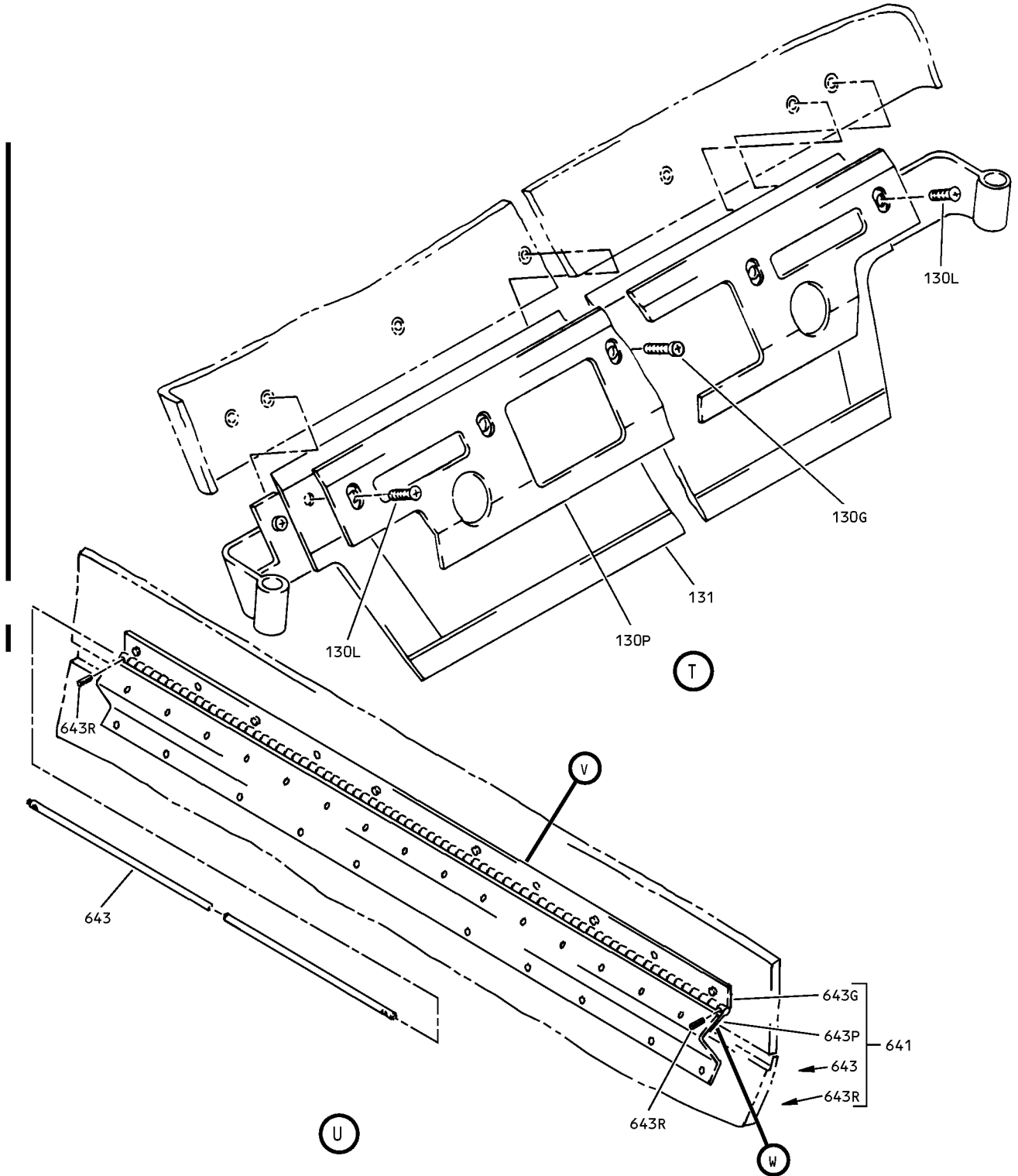
ILLUSTRATED PARTS LIST
01.1 Page 1019
Jul 01/04



Forward Door Bustle Assembly
Figure 1 (Sheet 9)

52-11-03

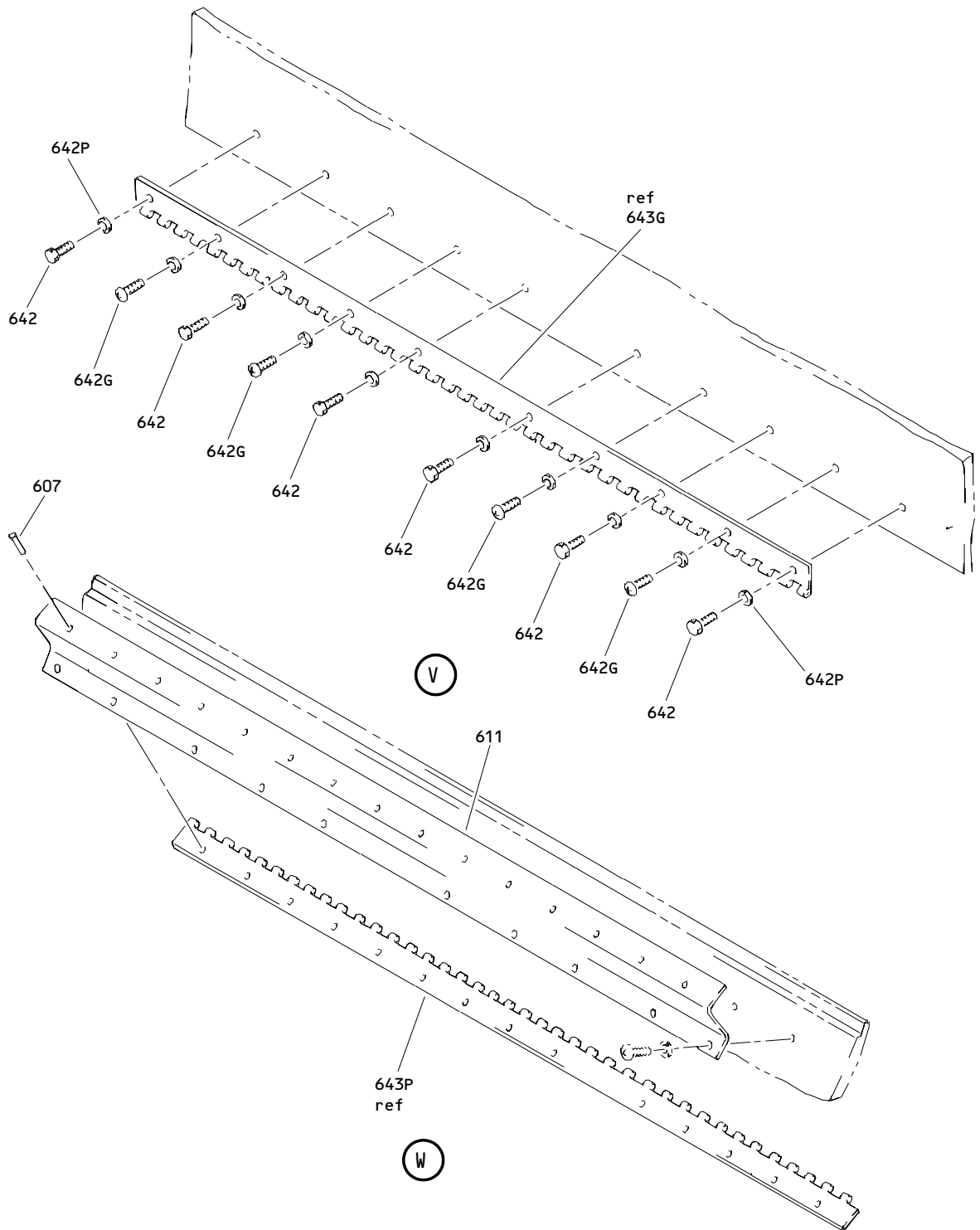
ILLUSTRATED PARTS LIST
01.1 Page 1020
Jul 01/04



Forward Door Bustle Assembly
Figure 1 (Sheet 10)

52-11-03

ILLUSTRATED PARTS LIST
01.1 Page 1021
Jul 01/04



Forward Door Bustle Assembly
Figure 1 (Sheet 11)

52-11-03

ILLUSTRATED PARTS LIST
01.1 Page 1022
Jul 01/04


BOEING
 COMPONENT
 MAINTENANCE MANUAL

FIG. & ITEM	PART NO.	AIRLINE PART NUMBER	NOMENCLATURE 1234567	EFF CODE	QTY PER ASSY
R 01-					
R -1	416T2042-4SP		BUSTLE ASSY-FWD DOOR	A	RF
R -1A	416T2042-5SP		BUSTLE ASSY-FWD DOOR RH SIDE	B	RF
R -1B	416T2042-9SP		BUSTLE ASSY-FWD DOOR	C	RF
R -1C	416T2042-10SP		BUSTLE ASSY-FWD DOOR	D	RF
-1D	416T2042-11SP		BUSTLE ASSY-FWD DOOR	E	RF
-1E	416T2042-12SP		BUSTLE ASSY-FWD DOOR	F	RF
R -1F	416T2042-12A		BUSTLE ASSY-FWD DOOR	G	RF
R -1G	416T2042-12D		BUSTLE ASSY-FWD DOOR	H	RF
R -1H	416T2042-12E		BUSTLE ASSY-FWD DOOR	J	RF
R -1J	416T2042-12F		BUSTLE ASSY-FWD DOOR	K	RF
R -1K	416T2042-12G		BUSTLE ASSY-FWD DOOR	L	RF
R -1L	416T2042-12H		BUSTLE ASSY-FWD DOOR	M	RF
R -1M	416T2042-12J		BUSTLE ASSY-FWD DOOR	N	RF
R -1N	416T2042-12L		BUSTLE ASSY-FWD DOOR	P	RF
R -1P	416T2042-12P		BUSTLE ASSY-FWD DOOR	Q	RF
R -1Q	416T2042-12R		BUSTLE ASSY-FWD DOOR	R	RF
R -1R	416T2042-12T		BUSTLE ASSY-FWD DOOR	S	RF
R -1S	416T2042-12W		BUSTLE ASSY-FWD DOOR	T	RF
R -1T	416T2042-12V		BUSTLE ASSY-FWD DOOR	U	RF
R -1U	416T2042-20B		BUSTLE ASSY-FWD DOOR	V	RF
R 5	NAS603-5		. SCREW	A-E	16
R -5A	BAC12FA3K5		. SCREW	F-V	16
R 7	NAS603-5		. SCREW	A-E	2
R -7A	NAS603-6P		. SCREW	F-V	2
R 10	AN960C10L		. WASHER	A-E	16
R 15	NAS620-10L		. WASHER		2
R 20	416T2280-1		. RETAINER-SEAL		2
R 25	416T2280-3		. RETAINER-SEAL		2
R 30	416T2207-10SP		. SEAL-SIDEWALL	A,B	1
R -30A	416T2207-18SP		. SEAL-SIDEWALL	C-F	1
R -30B	416T2207-18C		. SEAL-SIDEWALL	G-J,L M-V	1
R -30C	416T2207-18B		. SEAL-SIDEWALL	K	1
R 35	416T2207-9SP		. SEAL-SIDEWALL	A,B	1
R -35A	416T2207-17SP		. SEAL-SIDEWALL	C-F	1
R -35B	416T2207-17C		. SEAL-SIDEWALL	G-J,L M-V	1
R -35C	416T2207-17B		. SEAL-SIDEWALL	K	1
R 40	416T2207-14SP		. SEAL-SIDEWALL	A,B	1
R -40A	416T2207-22SP		. SEAL-SIDEWALL	C-F	1
R -40B	416T2207-22C		. SEAL-SIDEWALL	G-J,L M-V	1
R -40C	416T2207-22B		. SEAL-SIDEWALL	K	1
R 45	416T2207-13SP		. SEAL-SIDEWALL	A,B	1

52-11-03

ILLUSTRATED PARTS LIST

01.1

Page 1023

Jul 01/04

FIG. & ITEM	PART NO.	AIRLINE PART NUMBER	NOMENCLATURE 1234567	EFF CODE	QTY PER ASSY
01-					
R -45A	416T2207-21SP		.SEAL-SIDEWALL	C-F	1
R -45B	416T2207-21C		.SEAL-SIDEWALL	G-J, L M-V	1
R -45C	416T2207-21B		.SEAL-SIDEWALL	K	1
R 50	BACB30LH3-4		.BOLT		4
R 55	NAS603-9		.SCREW	A-E	4
R -55A	NAS603-9P		.SCREW	F-V	4
R 57	AN960C10L		.WASHER	A-E	4
R -57A	NAS1149D0332J		.WASHER	F-V	4
R 60	416T2159-13		.RAMP-LEVELING TAB	A-E	2
R -60A	416T2159-17		.RAMP-LEVELING TAB (OPT ITEM 60B)	F-S	2
R -60B	416T2159-13		.RAMP-LEVELING TAB (OPT ITEM 60A)	F-S	2
R -60C	416T2159-17		.RAMP-LEVELING TAB	T-V	2
R 65	416T2278-1		.TAB ASSY-LEVELING	A-E	2
R -65A	416T2278-3		.TAB ASSY-LEVELING (OPT ITEM 65B)	F-S	2
R -65B	416T2278-1		.TAB ASSY-LEVELING (OPT ITEM 65A)	F-S	2
R -65C	416T2278-3		.TAB ASSY-LEVELING	T-V	2
R 70	416T2278-2		.TAB ASSY-LEVELING	A-E	2
R -70A	416T2278-4		.TAB ASSY-LEVELING (OPT ITEM 70B)	F-S	2
R -70B	416T2278-2		.TAB ASSY-LEVELING (OPT ITEM 70A)	F-S	2
R -70C	416T2278-4		.TAB ASSY-LEVELING	T-V	2
71	416T2159-11		..PAD		1
72	416T2159-10		..TAB- (USED ON ITEM 65)	A-S	1
72A	416T2159-12		DELETED		
R -72B	416T2159-18		..TAB- (USED ON ITEM 65A)	F-V	1

52-11-03

 ILLUSTRATED PARTS LIST
 01.1 Page 1024
 Jul 01/04


BOEING
 COMPONENT
 MAINTENANCE MANUAL

FIG. & ITEM	PART NO.	AIRLINE PART NUMBER	NOMENCLATURE 1234567	EFF CODE	QTY PER ASSY
R 01-73	416T2159-12		..TAB- (USED ON ITEM 70)	A-S	1
R -73A	416T2159-19		..TAB- (USED ON ITEM 70A)	F-V	1
R 75	416T2262-1		.PLUG ASSY-SEAL CONNECTOR ATTACHING PARTS	A,B	2
R 80	NAS603-24		.SCREW	A,B	2
R 85	AN960-10L		.WASHER	A,B	2
			-----*-----		
R 90	416T2262-2		..INSERT	A,B	1
R 95	416T2262-3		..MOLDING	A,B	1
R 100	416T2271-7SP		.SEAL ASSY-CORNER	A,B	1
R -100A	416T2271-11SP		.SEAL ASSY-CORNER	C-F	1
R -100B	416T2271-11C		.SEAL ASSY-CORNER	G-J,N	1
				,U	
R -100C	416T2271-11B		.SEAL ASSY-CORNER	K	1
R -100D	416T2271-11E		.SEAL ASSY-CORNER	L,T	1
R -100E	416T2271-11F		.SEAL ASSY-CORNER	M,P-S	1
				,V	
R 105	416T2271-8SP		.SEAL ASSY-CORNER	A,B	1
R -105A	416T2271-12SP		.SEAL ASSY-CORNER	C-F	1
R -105B	416T2271-12C		.SEAL ASSY-CORNER	G-J,N	1
				,U	
R -105C	416T2271-12B		.SEAL ASSY-CORNER	K	1
R -105D	416T2271-12E		.SEAL ASSY-CORNER	L,T	1
R -105E	416T2271-12F		.SEAL ASSY-CORNER	M,P-S	1
				,V	
R 110	CA3105-1032-4		ATTACHING PARTS .SCREW- (V73439) (SPEC BACS12N10-4) (OPT CA3105-1032-4 (V78189)) (OPT SP1561-1032-4 (V73439))	A,B	2
R -110A	BACS12FA3C4		.SCREW	C,D	2
R -110B	BACS12FA3K4		.SCREW	E,G-V	2
			-----*-----		

52-11-03

 ILLUSTRATED PARTS LIST
 01.1 Page 1025
 Jul 01/04

FIG. & ITEM	PART NO.	AIRLINE PART NUMBER	NOMENCLATURE 1234567	EFF CODE	QTY PER ASSY
01-					
R 115	MS24693C270		.SCREW	A,B	2
R 120	416T2263-1		.STRIP	A,B	2
R 125	416T2158-10SP		.SEAL ASSY-BLADE ATTACHING PARTS	A,B	1
R 130	CA3105-1032-4		.SCREW- (V73439) (SPEC BACS12N10-4) (OPT CA3105-1032-4 (V78189)) (OPT SP1561-1032-4 (V73439)) -----*	A,B	11
R 130G	BACS12FA3C6		.SCREW	C,D	11
-130H	BACS12FA3K6		.SCREW	E	11
R -130J	BACS12FA3K5		.SCREW	F-V	11
R 130L	NAS514P1032-6		.SCREW	C-E	2
R -130M	NAS514P1032-5		.SCREW	F-V	2
R 130P	416T2831-2		.STIFFENER-BLADE SEAL	C-V	1
R 131	416T2158-13SP		.SEAL ASSY-BLADE (OPT ITEM 131A)	C-F	1
-131A	416T2158-15SP		.SEAL ASSY-BLADE (OPT ITEM 131)	C-F	1
R -131B	416T2158-15C		.SEAL ASSY-BLADE	G-J,N ,U	1
R -131C	416T2158-15B		.SEAL ASSY-BLADE	K	1
R -131D	416T2158-15E		.SEAL ASSY-BLADE	L,T	1
R -131E	416T2158-15F		.SEAL ASSY-BLADE	M,P-S ,V	1
			ATTACHING PARTS		

52-11-03

ILLUSTRATED PARTS LIST

01.1

Page 1026

Jul 01/04


BOEING
 COMPONENT
 MAINTENANCE MANUAL

FIG. & ITEM	PART NO.	AIRLINE PART NUMBER	NOMENCLATURE 1234567	EFF CODE	QTY PER ASSY
01-					
	132	BACS12FA3C7	DELETED		
	133	AN960-10L	DELETED		
R	135	416T2291-8	.LATCH ASSY		2
R	140	416T2291-9	.LATCH ASSY		2
R	145	NAS603-4	.SCREW	A-E	16
R	-145A	NAS603-4	.SCREW- (OPT ITEM 145B)	G-T	16
R	-145B	NAS603-4P	.SCREW- (OPT ITEM 145A)	G-T	16
R	-145C	NAS603-4P	.SCREW	F,U,V	16
R	150	AN960C10L	.WASHER -----*	A-E	16
R	-150A	NAS1149D0332J	.WASHER	F-V	16
R	155	NAS6703-20	..BOLT		1
R	160	AN960C10L	..WASHER		2
R	165	BACN10JC3M	..NUT		1
R	170	416T2178-1	..HOUSING-LEG LATCH (OPT ITEMS 170A, 170B)		2
R	-170A	416T2244-2	..HOUSING-LEG LATCH (OPT ITEMS 170, 170B)		2
R	-170B	416T2243-3	..HOUSING-LEG LATCH (OPT ITEMS 170, 170A)		2
	175	MS24665-151	DELETED		
	175A	BACP18BC02A004P	DELETED		
R	175B	BACP18BC02A04P	..PIN-COTTER		1
	180	MS20392-2C43	DELETED		
R	180A	BACP18BD2C43	..PIN-COTTER		1
R	185	NAS620C10L	..WASHER		3
R	190	H2950-5	..LATCH- (V83014) (OPT ITEM 190A)		1
R	-190A	CMWL700-1000-1	..LATCH- (OPT ITEM 190)		1
R	195	NAS514P1032-5	..SCREW		2
R	200	416T2245-4	..CLIP-LWR (OPT ITEM 200A)		1
R	-200A	416T2245-5	..CLIP-LWR (OPT ITEM 200)		1
R	205	416T2246-5	..HOUSING ASSY- (USED ON ITEM 135)		1
R	215	MS21209F1-10P	...INSERT		2
R	217	MS21209F1-30P	...INSERT		1
R	220	416T2246-7	...HOUSING		1
R	225	416T2246-6	..HOUSING ASSY- (USED ON ITEM 140)		1

52-11-03

ILLUSTRATED PARTS LIST

01.1

Page 1027

Jul 01/04

FIG. & ITEM	PART NO.	AIRLINE PART NUMBER	NOMENCLATURE 1234567	EFF CODE	QTY PER ASSY
01-					
R 230	MS21209F1-10P		...INSERT		2
R 232	MS21209F1-30P		...INSERT		1
R 235	416T2246-8		...HOUSING		1
R 240	416T2256-1SP		.BEZEL-LATCH (REPLD BY ITEM 240A)	A,F	4
R -240A	416T2256-2SP		.BEZEL-LATCH (REPLS ITEM 240)	A,F	4
R -240B	416T2256-2SP		.BEZEL-LATCH	B-E	4
R -240C	416T2256-2C		.BEZEL-LATCH	G-J,L M P-V	4
R -240D	416T2256-2B		.BEZEL-LATCH	K	4
R -240E	416T2256-2E		.BEZEL-LATCH	N	4
R 245	416T2800-15		.BRACKET ASSY-SPRING (LIMITED) (OPT ITEM 245A)	A	2
R -245A	416T2800-21		.BRACKET ASSY-SPRING (LIMITED) (OPT ITEM 245)	A	2
R -245B	416T2800-21		.BRACKET ASSY-SPRING ATTACHING PARTS	B-V	2
R 250	NAS603-4		.SCREW	A-E	8
R -250A	NAS603-4		.SCREW- (OPT ITEM 250B)	G-T	8
R -250B	NAS603-4P		.SCREW- (OPT ITEM 250A)	G-T	8
R -250C	NAS603-4P		.SCREW	F,U,V	8
R 255	AN960C10L		.WASHER -----*	A-E	8
R -255A	NAS1149D0332J		.WASHER	F-V	8
R 260	NAS6603-32		..BOLT- (OPT ITEM 260A)		1

52-11-03

 ILLUSTRATED PARTS LIST
 01.1 Page 1028
 Jul 01/04


BOEING
 COMPONENT
 MAINTENANCE MANUAL

FIG. & ITEM	PART NO.	AIRLINE PART NUMBER	NOMENCLATURE 1234567	EFF CODE	QTY PER ASSY
	01- -260A	NAS6703-32	..BOLT- (OPT ITEM 260)		1
R	265	AN960C10L	..WASHER		2
R	270	H10-3BAC	..NUT- (V15653) (SPEC BACN10JC3) (OPT NS202101-02 (V80539)) (OPT RMLH9075-3W (V72962)) (OPT T6S1032J (V71087)) (OPT VN303A02 (V92215)) (OPT 96-02 (V80539)) (OPT BRH10A3 (V52828))		1
R	275	416T2800-8	..SPACER		2
R	280	416T2800-7	..SPACER		1
R	285	416T2800-6	..SLEEVE		1
	290	NAS1738E4	..RIVET- (SIZE DETERMINE ON INST)		2
R	295	416T2800-19	..FAIRLEAD		1
	300	BACR15BB4D	..RIVET- (SIZE DETERMINE ON INST)		2
R	305	416T2800-20	..PAD- (USED ON ITEM 245A)		1
R	310	416T2800-17	..BRACKET		1
R	315	MS24586-764	.SPRING		2
R	320	MS24665-132	.PIN-COTTER	A-E	2
R	325	MS20392-2C9	.PIN-DRILLED SHANK	A-E	2
R	330	AN960C10L	.WASHER	A-E	2

52-11-03

ILLUSTRATED PARTS LIST

01.1

Page 1029

Jul 01/04

FIG. & ITEM	PART NO.	AIRLINE PART NUMBER	NOMENCLATURE 1234567	EFF CODE	QTY PER ASSY
R 01-335	416T2281-2		.LINK	A,B	2
-335A	416T2281-2		.LINK- (THE COMBINATION OF ITEMS 335A AND 340A OPT TO ITEM 341. ITEM 341 IS PREFERRED PART)	C,D	2
R 340	416T2282-3		.CABLE ASSY	A,B	2
-340A	416T2282-3		.CABLE ASSY- (THE COMBINATION OF ITEMS 335A AND 340A OPT TO ITEM 341. ITEM 341 IS PREFERRED PART)	C,D	2
341	416T2282-4		.CABLE ASSY- (THE COMBINATION OF ITEMS 335A AND 340A OPT TO ITEM 341. ITEM 341 IS PREFERRED PART)	C,D	2
-341A	416T2282-4		.CABLE ASSY ATTACHING PARTS	F-V	2
R 345	NAS603-4		.SCREW	A-E	4
R -345A	NAS603-4		.SCREW- (OPT ITEM 345B)	G-T	4
R -345B	NAS603-4P		.SCREW- (OPT ITEM 345A)	G-T	4
R -345C	NAS603-4P		.SCREW	F,U,V	4
R 350	AN960C10L		.WASHER	A-E	4
R -350A	NAS1149D0332J		.WASHER	F-V	4
R 355	MS20667-2		-----*----- . TERMINAL- (USED ON ITEM 340A)	A-D	1

52-11-03

 ILLUSTRATED PARTS LIST
 01.1 Page 1030
 Jul 01/04


BOEING
 COMPONENT
 MAINTENANCE MANUAL

FIG. & ITEM	PART NO.	AIRLINE PART NUMBER	NOMENCLATURE 1234567	EFF CODE	QTY PER ASSY
01-356	BA3-2		..TERMINAL- (V65196) (SPEC BACT14B2) (OPT HI2487-2 (V26590)) (OPT HT200-2 (V83014)) (OPT RA2487-2 (V80523)) (OPT BM2487-2 (V22277)) (OPT BM2487-2 (V22277)) (USED ON ITEM 341)	C-V	1
R 360	AN960C3		..WASHER- (USED ON ITEM 340A)	A-D	1
362	416T2282-5		..LINK- (USED ON ITEM 341)	C-T	1
R 365	MS20664C2		..BALL END		1
R 370	416T2281-1		..STRAP-ANCHOR		1
R 375	416T2282-2		..CABLE- (USED ON ITEM 340A)	A-D	1
376	416T2282-6		..CABLE- (USED ON ITEM 341)	C-V	1
R 380	416T2289-1		.PAD ASSY-BEARING ATTACHING PARTS		2
R 385	NAS514P1032-5		.SCREW -----*-----		4
387	416T2289-3		..SKID PLATE-UPPER		1
389	416T2289-4		..SKID PLATE-UPPER		1
R 390	416T2303-1		.RETAINER-VIEWPORT		1
R 395	416T2259-2SP		.VIEWPORT ASSY- (OPT ITEM 395A)	A,B	1
R -395A	416T2259-3SP		.VIEWPORT ASSY- (OPT ITEM 395)	A,B	1
-395B	416T2259-2SP		.VIEWPORT ASSY	C-F	1
R -395C	416T2259-2C		.VIEWPORT ASSY	G-J,L M, P-V	1
R -395D	416T2259-2B		.VIEWPORT ASSY	K	1
R -395E	416T2259-2E		.VIEWPORT ASSY	N	1

52-11-03

ILLUSTRATED PARTS LIST

01.1

Page 1031

Jul 01/04

FIG. & ITEM	PART NO.	AIRLINE PART NUMBER	NOMENCLATURE 1234567	EFF CODE	QTY PER ASSY
01-					
R 400	MS20253P1-240		..PIN-HINGE		1
R 405	416T2305-1		..SPRING		1
R 410	416T2305-2		..SPRING		1
R 415	416T2266-1SP		..SUPPORT-MIRROR (USED ON ITEM 395)		1
R -415A	416T2304-1SP		..SUPPORT-MIRROR (USED ON ITEM 395A)	A,B	1
R 420	416T2164-35		..MIRROR		1
R 425	416T2259-4		..FILLER		2
R 430	416T2260-3SP		..BEZEL- (USED ON ITEM 395)		1
R -430A	416T2298-1SP		..BEZEL- (USED ON ITEM 395A)		1
R 435	416T2277-9		.CHANNEL ASSY ATTACHING PARTS		1
R 440	NAS603-4P		.SCREW		6
R 445	AN960C10L		.WASHER -----*-----	A-E	6
R -445A	NAS1149D0332J		.WASHER	F-V	6
450	BACR15CE4D		..RIVET- (SIZE DETERMINE ON INST)		12
R 455	416T2277-10		..BRACKET		1
460	BACR15BB4D		DELETED		
R 460A	BACR15BB4AD		..RIVET- (SIZE DETERMINE ON INST)		3
R 465	416T2277-6		..BRACKET		1
R 470	416T2277-7		..BRACKET		1
R 475	NAS603-10P		.SCREW	B,D	3
R 480	BACW10P63AL		.WASHER	B,D	3

52-11-03

 ILLUSTRATED PARTS LIST
 01.1 Page 1032
 Jul 01/04


BOEING
 COMPONENT
 MAINTENANCE MANUAL

FIG. & ITEM	PART NO.	AIRLINE PART NUMBER	NOMENCLATURE 1234567	EFF CODE	QTY PER ASSY
R 01-485	26C02		.NUT- (V80539) (SPEC BACN10R10)	B,D	3
R 490	416T2042-6SP		.STRIP-RUB	B,D	1
R 495	416T2042-7SP		.INSERT-RUB STRIP	B,D	1
R 500	416T2042-8SP		.CAP-END	B,D	1
R 505	413T3702-2SP		.CAP-END	B,D	1
R 510	NAS603-4		.SCREW	A-E	8
R -510A	NAS603-4		.SCREW- (OPT ITEM 510B)	G-T	8
R -510B	NAS603-4P		.SCREW- (OPT ITEM 510A)	G-T	8
R -510C	NAS603-4P		ATTACHING PARTS .SCREW -----*-----	F,U,V	8
R 515	AN960C10L		.WASHER	A-E	8
R -515A	NAS1149D0332J		.WASHER	F-V	8
R 520	416T2226-1SP		.HANDLE-DECORATIVE COVER	A-F	1
R -520A	416T2226-3SP		DELETED		
R -520B	416T2226-7C		.HANDLE-DECORATIVE COVER (OPT ITEM 520C)	G,K,P	1
R -520C	416T2226-1A		.HANDLE-DECORATIVE COVER (OPT ITEM 520B)	G,K,P	1
R -520D	416T2226-7B		.HANDLE-DECORATIVE COVER (OPT ITEM 520E)	H	1
R -520E	416T2226-1B		.HANDLE-DECORATIVE COVER (OPT ITEM 520D)	H	1
R -520F	416T2226-7M		.HANDLE-DECORATIVE COVER (OPT ITEM 520G)	J	1
R -520G	416T2226-1F		.HANDLE-DECORATIVE COVER (OPT ITEM 520F)	J	1
R -520H	416T2226-7G		.HANDLE-DECORATIVE COVER (OPT ITEM 520J)	L,M	1
R -520J	416T2226-1G		.HANDLE-DECORATIVE COVER (OPT ITEM 520H)	L,M	1
R -520K	416T2226-7H		.HANDLE-DECORATIVE COVER (OPT ITEM 520L)	N,R	1
R -520L	416T2226-1H		.HANDLE-DECORATIVE COVER (OPT ITEM 520K)	N,R	1
R -520M	416T2226-7J		.HANDLE-DECORATIVE COVER (OPT ITEM 520N)	Q	1
R -520N	416T2226-1J		.HANDLE-DECORATIVE COVER (OPT ITEM 520M)	Q	1
R -520P	416T2226-7L		.HANDLE-DECORATIVE COVER (OPT ITEM 520Q)	S	1

52-11-03

 ILLUSTRATED PARTS LIST
 01.1 Page 1033
 Jul 01/04

FIG. & ITEM	PART NO.	AIRLINE PART NUMBER	NOMENCLATURE 1234567	EFF CODE	QTY PER ASSY
01-					
R -520Q	416T2226-1L		.HANDLE-DECORATIVE COVER (OPT ITEM 520P)	S	1
R -520R	416T2226-7D		.HANDLE-DECORATIVE COVER (OPT ITEM 520S)	T	1
R -520S	416T2226-1D		.HANDLE-DECORATIVE COVER (OPT ITEM 520R)	T	1
R -520T	416T2226-7G		.HANDLE-DECORATIVE COVER	U	1
R -520U	416T2226-7L		.HANDLE-DECORATIVE COVER	V	1
R 525	416T2226-2SP		.HANDLE-DECORATIVE COVER	A-F	1
R -525A	416T2226-4SP		DELETED		
R -525B	416T2226-8C		.HANDLE-DECORATIVE COVER (OPT ITEM 525C)	G,K,P	1
R -525C	416T2226-2A		.HANDLE-DECORATIVE COVER (OPT ITEM 525B)	G,K,P	1
R -525D	416T2226-8B		.HANDLE-DECORATIVE COVER (OPT ITEM 525E)	H	1
R -525E	416T2226-2B		.HANDLE-DECORATIVE COVER (OPT ITEM 525D)	H	1
R -525F	416T2226-8M		.HANDLE-DECORATIVE COVER (OPT ITEM 525G)	J	1
R -525G	416T2226-2F		.HANDLE-DECORATIVE COVER (OPT ITEM 525F)	J	1
R -525H	416T2226-8G		.HANDLE-DECORATIVE COVER (OPT ITEM 525J)	L,M	1
R -525J	416T2226-2G		.HANDLE-DECORATIVE COVER (OPT ITEM 525H)	L,M	1
R -525K	416T2226-8H		.HANDLE-DECORATIVE COVER (OPT ITEM 525L)	N,R	1
R -525L	416T2226-2H		.HANDLE-DECORATIVE COVER (OPT ITEM 525K)	N,R	1
R -525M	416T2226-8J		.HANDLE-DECORATIVE COVER (OPT ITEM 525N)	Q	1
R -525N	416T2226-2J		.HANDLE-DECORATIVE COVER (OPT ITEM 525M)	Q	1
R -525P	416T2226-8L		.HANDLE-DECORATIVE COVER (OPT ITEM 525Q)	S	1
R -525Q	416T2226-2L		.HANDLE-DECORATIVE COVER (OPT ITEM 525P)	S	1
R -525R	416T2226-8D		.HANDLE-DECORATIVE COVER (OPT ITEM 525S)	T	1
R -525S	416T2226-2D		.HANDLE-DECORATIVE COVER (OPT ITEM 525R)	T	1
R -525T	416T2226-8G		.HANDLE-DECORATIVE COVER	U	1
R -525U	416T2226-8L		.HANDLE-DECORATIVE COVER	V	1

52-11-03

 ILLUSTRATED PARTS LIST
 01.1 Page 1034
 Jul 01/04


BOEING
 COMPONENT
 MAINTENANCE MANUAL

FIG. & ITEM	PART NO.	AIRLINE PART NUMBER	NOMENCLATURE 1234567	EFF CODE	QTY PER ASSY
01-					
R 530	416T2223-6		.HANDLE ASSY	A-U	1
R -530A	416T2223-12		.HANDLE ASSY- (OPT ITEM 530B)	V	1
R -530B	416T2223-6		.HANDLE ASSY- (OPT ITEM 530A)	V	1
R 535	416T2223-7		.HANDLE ASSY	A-U	1
R -535A	416T2223-11		.HANDLE ASSY- (OPT ITEM 535B)	V	1
R -535B	416T2223-7		.HANDLE ASSY- (OPT ITEM 535A)	V	1
			ATTACHING PARTS		
R 540	NAS514P1032-5		.SCREW		2
R 545	NAS603-5		.SCREW	A-E	6
	-545A	NAS603-5	DELETED		
	-545B	NAS603-5P	DELETED		
R -545C	NAS603-6P		.SCREW	F-V	6
R 550	AN960C10		.WASHER	A-E	6
			-----*-----		
R -550A	NAS1149D0332J		.WASHER	F-V	6
R 555	NAS1836-3-07		..INSERT	A-E	4
R -555A	BACI12AD3-07		..INSERT	F-V	4
R 560	416T2223-3		..BOSS-		4
			(USED ON ITEMS 530, 535)		
R -560A	416T2223-10		..BOSS-	V	4
			(USED ON ITEMS 530A, 535A)		
R 565	416T2223-8		..HANDLE-		1
			(USED ON ITEM 530)		
R -565A	416T2223-14		..HANDLE-	V	1
			(USED ON ITEM 530A)		
R 570	416T2223-9		..HANDLE-		1
			(USED ON ITEM 535)		

52-11-03

 ILLUSTRATED PARTS LIST
 01.1 Page 1035
 Jul 01/04

FIG. & ITEM	PART NO.	AIRLINE PART NUMBER	NOMENCLATURE 1234567	EFF CODE	QTY PER ASSY
R 01- -570A	416T2223-13		..HANDLE- (USED ON ITEM 535A)	V	1
R 572	BACS40R007E029F		.SHIM	A-V	AR
R 575	416T2284-8SP		.SEAL- (REPLD BY ITEM 575A)	A	2
R -575A	416T2284-10SP		.SEAL- (REPLS ITEM 575)	A	2
R -575B	416T2284-10SP		.SEAL	B-F	2
R -575C	416T2284-10C		.SEAL	G-J, L-V	2
R -575D	416T2284-10B		.SEAL	K	2
R 577	NAS603-4		.SCREW	A-E	10
R -577A	NAS603-4		.SCREW- (OPT ITEM 577B)	G-T	10
R -577B	NAS603-4P		.SCREW- (OPT ITEM 577A)	G-T	10
R -577C	NAS603-4P		ATTACHING PARTS .SCREW -----*-----	F,U,V	10
R 579	AN960C10L		.WASHER	A-E	10
R -579A	NAS1149D0332J		.WASHER	F-V	10
R 580	416T2283-24SP		.SHELL ASSY	A-D	1
-580A	416T2283-32SP		.SHELL ASSY-LOWER	E	1
-580B	416T2283-34SP		.SHELL ASSY-LOWER	F	1
R -580C	416T2283-34A		.SHELL ASSY-LOWER	G-J,L, M, P-U	1
R -580D	416T2283-34B		.SHELL ASSY-LOWER	K	1
R -580E	416T2283-34C		.SHELL ASSY-LOWER	N	1
R -580F	416T2283-51B		.SHELL ASSY-LOWER ATTACHING PARTS	V	1

52-11-03

ILLUSTRATED PARTS LIST

01.1

Page 1036

Jul 01/04


BOEING
 COMPONENT
 MAINTENANCE MANUAL

FIG. & ITEM	PART NO.	AIRLINE PART NUMBER	NOMENCLATURE 1234567	EFF CODE	QTY PER ASSY
01-					
	585	NAS603-4	DELETED		
	590	AN960C10L	DELETED		
R	595	NAS1836-3-07	..INSERT	A-U	41
R	-595A	BACI12AD3-07	..INSERT	V	41
	597	BACI12AD3-07	DELETED		
R	600	416T2283-4	..SHELL ASSY- (OPT ITEM 600A)	A-D	1
R	-600A	416T2283-27	..SHELL ASSY- (OPT ITEM 600)	A-D	1
	605	BACR15BA4AD	.RIVET- (SIZE DETERMINE ON INST)	A,B	14
	607	BACR15BA4AD	.RIVET- (SIZE DETERMINE ON INST)	C-V	15
R	610	416T2274-1	.CONNECTION-HINGE	A,B	2
R	611	416T2832-1	.CONNECTION-HINGE	C-V	1
R	615	416T2290-1	.PIN-HINGE	A,B	1
R	620	416T2273-1	.HINGE HALF	A,B	2
R	625	NAS6703P5	.BOLT	A,B	6
R	630	NAS603-5	.SCREW	A,B	4
R	635	BACW10P43AL	.WASHER	A,B	10
R	640	416T2273-3	.HINGE HALF	A,B	2
R	641	416T2833-1	.HINGE ASSY	C-V	1
R	642	NAS6703P5	.BOLT	C-E	6
	-642A	NAS603-5	DELETED		
	-642B	NAS603-5P	DELETED		
R	-642C	NAS6703P4	.BOLT	F-V	6
R	642G	NAS603-5	.SCREW	C-E	4
R	-642H	NAS603-5P	.SCREW	F,U,V	4
R	-642K	NAS603-5	.SCREW- (OPT ITEM 642L)	G-T	4
R	-642L	NAS603-5P	.SCREW- (OPT ITEM 642K)	G-T	4
R	642P	BACW10P43AL	.WASHER -----*	C-V	10
R	643	MS20253P2-2990	..PIN	C-V	1
R	643G	416T2833-2	..HINGE HALF	C-V	1
R	643P	416T2833-3	..HINGE HALF	C-V	1
R	643R	MS16562-1	..PIN-SPRING	C-V	2
R	645	416T2247-2SP	.STRIP-RUB	A-F	1

52-11-03

 ILLUSTRATED PARTS LIST
 01.1 Page 1037
 Jul 01/04

FIG. & ITEM	PART NO.	AIRLINE PART NUMBER	NOMENCLATURE 1234567	EFF CODE	QTY PER ASSY
01-					
R -645A	416T2247-3SP		DELETED		
R -645B	416T2247-2A		.STRIP-RUB	G,K,P	1
R -645C	416T2247-2B		.STRIP-RUB	H	1
R -645D	416T2247-2F		.STRIP-RUB	J	1
R -645E	416T2247-2G		.STRIP-RUB	L,M,U	1
R -645F	416T2247-2H		.STRIP-RUB	N,R	1
R -645G	416T2247-2E		.STRIP-RUB	Q	1
R -645H	416T2247-2J		.STRIP-RUB	S,V	1
R -645J	416T2247-2D		.STRIP-RUB	T	1
R 650	NAS6703P4		.BOLT		2
R 655	BACW10P43AL		.WASHER		2
R 660	416T2311-1		.BLOCK ASSY-SPRT		2
R 665	416T2248-4		.RETAINER ASSY		1
R 670	74-13-210-24		..INSERT- (V94222) (OPT ITEM 670A)		8
R -670A	CLSS032-2		..INSERT- (V46384) (OPT ITEM 670)		8
R 675	416T2248-5		..RETAINER		1
R 680	416T2284-7SP		.SEAL	A-F	1
R -680A	416T2284-7C		.SEAL	G-J, L-V	1
R -680B	416T2284-7B		.SEAL	K	1
R 685	416T2283-25SP		.SHELL ASSY	A-D	1
-685A	416T2283-31SP		.SHELL ASSY	E	1
-685B	416T2283-33SP		.SHELL ASSY	F	1
R -685C	416T2283-33A		.SHELL ASSY	G-J,L M, P-U	1
R -685D	416T2283-33B		.SHELL ASSY	K	1
R -685E	416T2283-33C		.SHELL ASSY	N	1
R -685F	416T2283-50B		.SHELL ASSY	V	1
687	416T2191-2		..CHANNEL	E-V	4
R 690	NAS1836-3-07		..INSERT	A-U	52
R -690A	BACI12AD3-07		..INSERT	V	52
693	BACI12AD3-07		DELETED		
695	NAS1836C3-07		DELETED		
696	SL618-3A		..INSERT- (V97393)	F-V	8
R 700	416T2283-26		..SHELL ASSY- (OPT ITEM 700A)	A-D	1
R -700A	416T2283-28		..SHELL ASSY- (OPT ITEM 700)	A-D	1
705	NAS1836-3-07		DELETED		

52-11-03

ILLUSTRATED PARTS LIST

01.1

Page 1038

Jul 01/04


BOEING
 COMPONENT
 MAINTENANCE MANUAL

FIG. & ITEM	PART NO.	AIRLINE PART NUMBER	NOMENCLATURE 1234567	EFF CODE	QTY PER ASSY
R 01- 710	SL618-3A		...INSERT- (V97393)	A-D	8
R 715	416T2191-2		...CHANNEL	A-D	4

- Item Not Illustrated

52-11-03

ILLUSTRATED PARTS LIST

01.1

Page 1039

Jul 01/04